

A46 Coventry Junctions (Walsgrave)

Scheme number: TR010066

6.3 Environmental Statement

Appendices

Appendix 6.1 Cultural Heritage Information

APFP Regulations 5(2)(a)

Planning Act 2008

Infrastructure Planning (Applications: Prescribed Forms and
Procedure) Regulations 2009

Volume 6

November 2024

Infrastructure Planning

Planning Act 2008

**The Infrastructure Planning
(Applications: Prescribed
Forms and Procedure)
Regulations 2009**

A46 Coventry Junctions (Walsgrave)
Development Consent Order 202[x]

ENVIRONMENTAL STATEMENT APPENDICES
Appendix 6.1 Cultural Heritage Information

Regulation Number	Regulation 5(2)(a)
Planning Inspectorate Scheme Reference	TR010066
Application Document Reference	TR010066/APP/6.3
Author	A46 Coventry Junctions (Walsgrave), Project Team & National Highways

Version	Date	Status of Version
Rev 0	November 2024	Application Issue

Table of contents

1.	Introduction.....	1
1.1.	General	1
1.2.	Study area	1
1.3.	Data sources	2
1.4.	Limitations	3
2.	Background history and archaeology	5
2.1.	Topography and geology.....	5
2.2.	Overview of the historic environment.....	6
2.3.	Archaeological and historical narrative.....	9
2.4.	Methodology for impact assessment.....	18
2.5.	Assessment of value/sensitivity	22
	References	88
	Abbreviations and glossary	91

Table of Illustrations

Plate 1. Satellite overlain by LiDAR (open govt. licence).....	5
Plate 2. 1887 OS Map, 1:2,500	16
Plate 3. 1887 OS Map, 1:2,500	16
Plate 4. 1925 OS Map, 1:2,500	18

Tables

Table 1: Criteria for assessing Value/Sensitivity	19
Table 2: Criteria for assessing magnitude of impact.....	20
Table 3. Criteria for assessing Significance of Effect (taken from DMRB LA104 table 3.8.1)	21
Table 4 Assessment of value/sensitivity	22
Table 5 Assessment of magnitude of impact.....	66

1. Introduction

1.1. General

- 1.1.1. This Appendix 6.1 informs the Environmental Statement (ES) Chapter 6 (Cultural Heritage) (**TR010066/APP/6.1**). It presents the background heritage information and context (baseline) of the proposed Scheme and informs the assessment of effects found in that chapter.
- 1.1.2. Tables containing assessments of value/significance and impacts before mitigation are included at the end of this appendix for convenience of reference. The method used in those assessments is as set out in ES Chapter 6 (Cultural Heritage) (**TR010066/APP/6.1**) and has been expanded upon in this appendix so that the chapter can remain focused.

1.2. Study area

- 1.2.1. In accordance with Design Manual for Roads and Bridges (DMRB) LA 106 Cultural heritage assessment, the study area should include the settings of any designated or other cultural heritage resource in the footprint of the Scheme or within the zone of visual influence (ZVI) or potentially affected by noise. The zone of visual influence is derived from the zone of theoretical visibility (ZTV) as a baseline, modified with on-site observations and professional judgement. The ZVI does not have a usefully mappable output, as it is based partly on professional judgement and will change with season and weather. The results of this process are included in Table 5.
- 1.2.2. For details concerning the generation and layout of the ZTV, refer to ES Chapter 7 (Landscape and Visual Effects) (**TR010066/APP/6.1**).
- 1.2.3. A 1km buffer from the Order Limits was assessed alongside the ZVI and no sensitive assets were identified beyond a 1km study area.
- 1.2.4. A 1km buffer was agreed with the Local Authority archaeological advisors to be appropriate to inform the potential impacts of the Scheme at this stage. However, data from a wider area was examined to determine if there may be a risk of effects on the settings of particularly sensitive assets. This wider area was based on professional judgement considering the current proposals, surrounding topography, the types of assets in the region and on consultation responses.
- 1.2.5. This allows for consideration of all known heritage assets which may indicate the potential for further unrecorded archaeological remains within the Order Limits footprint. Records of designated and non-designated assets were examined from a wider area beyond the study area to identify any assets that may be particularly

sensitive to changes in their settings from the Scheme. No such assets were identified. Consideration of setting was not limited to direct line of sight or purely visual factors, following the various guidance documents (see below).

- 1.2.6. Two assets outside the ZTV and 1km buffer were flagged for checking in early consultation with the Local Planning Authority (LPA) archaeological advisors, conservation officers and Historic England. These were the listed buildings within Coombe Abbey Park and Brinklow Castle Mound scheduled monument. These are included in the study area and are discussed below.

1.3. Data sources

- 1.3.1. The following baseline research has been undertaken for this assessment:

- Examination of the local, regional and national planning policies in relation to the historic environment.
- A search of the National Heritage List for England (NHLE), maintained by Historic England, for the location and status of designated heritage assets (scheduled monuments, registered parks and gardens, registered battlefields and listed buildings).
- A search of the Warwickshire and Coventry County Council Historic Environment Record (HER) databases for details of known undesignated heritage assets: archaeological sites and find spots, locally listed buildings and archaeological event location. This data was collected for a 3km radius around the Scheme footprint, as any effects on these types of asset beyond 1km are not considered potentially significant and a 3km radius provides more data to improve modelling of archaeological potential.
- Warwickshire Record Office for historic mapping.
- A site visit of the land within the Order Limits to examine the ground conditions and potential for previously unrecorded heritage assets. This excluded the existing A46 carriageway and included the study area where access was possible.
- Consultation of the webpages of Rugby Borough Council and Coventry City Council for details of Conservation Areas and Historic Landscape Characterisation data.
- An examination of relevant published and unpublished archaeological and historic documentary sources, for example journals and historic records.
- An examination of topographical and geological data.
- A map regression exercise was undertaken using historic maps to determine previous land use within the Order Limits.
- The results of an aerial photograph and Light Detection and Ranging (LiDAR) review were considered.

- The results of a programme of archaeological fieldwork are presented in separate appendices to the Environmental Statement. The relevant details are incorporated into this baseline.
- Geophysical Survey Report (ES Appendix 6.2 (**TR010066/APP/6.3**))
- Assessment Report for Archaeological Watching Brief (ES Appendix 6.3 (**TR010066/APP/6.3**))
- Archaeological Trial Trenching Survey Report (ES Appendix 6.4 (**TR010066/APP/6.3**))

1.3.2. Heritage assets are referred to by their NLHE or Warwickshire and/or Coventry HER reference number. Assets recorded by multiple sources are referred to in the following order of preference, NLHE, HER. Assets identified during the historic map regression are given a Unique Identifier, HA for “Heritage Asset”.

1.3.3. Heritage assets are presented on the following figures:

- ES Figure 6.1 (Designated Heritage Assets) (**TR010066/APP/6.2**)
- ES Figure 6.2 (Non-Designated Heritage Assets) (**TR010066/APP/6.2**)
- ES Figure 6.3 (Heritage Events – Potential) (**TR010066/APP/6.2**).

1.4. Limitations

1.4.1. The baseline information presented below is based on NHLE and Warwickshire and Coventry HER data obtained in April 2023 and updated at regular intervals. Data was gathered from beyond the study area, to inform context.

1.4.2. HERs are by their nature incomplete and are constantly being updated at source. As a result, they are limited in their ability to predict previously unknown archaeology within the Order Limits. Information from the Warwickshire and Coventry City Council HERs has been a starting point for further research during the environmental assessment rather than acting as a definitive list of assets. Information provided by the HER can be limited due to its dependence on opportunities for historic and archaeological research, fieldwork, and discovery. Where nothing of historic interest is shown in a particular area, this can be down to a lack of research or investigation, rather than a true lack of archaeological remains, historic buildings or historic landscapes.

1.4.3. The current understanding of the extent and survival of archaeological remains within the study area is based on data from the sources above. However, the specific nature, extent, date, degree of preservation and significance of known and unknown archaeological remains is difficult to predict without intrusive investigation. The uncertainty in predicting impacts and effects upon such

resources is inherent in all such studies and should be held present in ones understanding of the whole process.

- 1.4.4. Documentary sources are rare before the medieval period, and many historic documents are inherently biased. Older primary sources often fail to accurately locate sites and interpretation can be subjective.
- 1.4.5. The site visit was undertaken in summer 2023 and some agricultural fields within the Order Limits were under crop. The verges around the existing carriageway were largely obscured by vegetation. Outside the Order Limits, observations were limited to public rights of way and the publicly accessible parts of Coombe Abbey Park. These issues are not considered to be significant, as data from remote sensing surveys and archaeological investigations cover these limitations to adequately inform the impact assessment as presented in ES Chapter 6 (Cultural Heritage) (**TR010066/APP/6.1**).

2. Background history and archaeology

2.1. Topography and geology

- 2.1.1. The landscape of the study area is generally flat, with only gentle slopes visible in the elevation data apart from artificially made embankments that border the existing A46 carriageway to the south or where ground levels have been reduced to accommodate the A46. The Scheme sits between 75-80m Above ordnance Datum (AoD). The northern part of the Order Limits is surrounded by agricultural fields to the east, north and west. In the southern extent, it is bordered by the grade II* Coombe Abbey registered park and garden to the east and modern housing developments within Binley to the west.

Plate 1. Satellite overlain by LiDAR (open govt. licence)



- 2.1.2. The bedrock geology within the Order Limits is defined by the British Geological Survey (BGS) as Mercia Mudstone Group – Mudstone. The overlying superficial deposit is recorded as Thrussington Member – Diamicton in the northern extent of the Order Limits that interchanges with Bosworth Clay Member – clay and silt,

Baginton Sand and Gravel Formation – sand and gravel, Alluvium – clay, silt, sand and gravel, as well as River Terrace Deposits – sand and gravel.

- 2.1.3. Superficial deposits have the potential to overlay archaeological remains. The areas of alluvium within the Order Limits may denote greater archaeological potential, as river/stream edges are hotspots for archaeological remains of a Prehistoric to medieval date, as well as geoarchaeological and paleoenvironmental information. The river terrace deposits within the Order Limits can also include Prehistoric lithic scatters. The river terrace gravels recorded within the Order Limits have been confirmed during the Geophysical Survey.

2.2. Overview of the historic environment

- 2.2.1. The full list of known heritage assets is presented in Table 4 below, and the location of each is shown on ES Figure 6.1 (Designated Heritage Assets) and ES Figure 6.2 (Non-Designated Heritage Assets) (**TR010066/APP/6.2**).
- 2.2.2. There are 28 designated heritage assets recorded within the 1km study area, none of these are within the Order Limits. These comprise:
- Two scheduled monuments
 - One grade II* registered park and garden/conservation area
 - 25 listed buildings, two grade I, two grade II* and 21 grade II
- 2.2.3. The Warwickshire and Coventry City Council HERs record 145 known non-designated heritage assets within 1km of the Order Limits. Five of these are within or partially within the Order Limits.
- Two HER records of a post-medieval turnpike road, running east to west from Market Harborough to Coventry following the same trajectory as the B4428 in the southern part of the Order Limits (MCT15261; MWA4788).
 - Ridge and furrow cultivation recorded along the B4082 to the west of the A46 roundabout dates to the post-medieval period (1500-1900 CE) with post-1800 CE coins and a belt buckle found in the same area (MCT891).
 - A point HER record for Coombe Abbey Park: Fishpond, Wood, Deer Park and Field system (MWA3740) is also recorded within the Order Limits. However, this is a technical mapping coordinate issue. Coombe Abbey Park is located outside the Order Limits, immediately adjacent to the east as represented by the polygon for the Coombe Abbey registered park and garden.
 - Two further areas of ridge and furrow recorded within the Order Limits by the Warwickshire HER, these ridge and furrow assets are not attributed an asset number but are assigned RF6 and RF7 as unique identifiers.

2.2.4. The remaining 144 non-designated heritage assets include:

- Two findspots
- 142 historical buildings, structures and archaeological sites.

2.2.5. These non-designated heritage assets predominantly relate to medieval and post-medieval agricultural activity with numerous regimes of ridge and furrow cultivation, farmsteads and agricultural features identified. However, a cropmark of a possible prehistoric enclosure, ring ditch and linear features 500m north of Coombe Abbey (MWA13379), c. 950m east of the Order Limits, as well as a possible Romano-British double-ditched enclosure (MWA19114), c. 325m east of the Order Limits have been identified.

2.2.6. A further 11 heritage assets have been identified within the Order Limits during the historic map regression. These all date to the post-medieval period.

Historic landscape character

2.2.7. The western half of the Order Limits is located within Coventry City Council, with the Coventry City Council historic landscape report for HLC Area 28 – South Sowe Character Area defining the north-western part of the landscape within the Order Limits as irregular-shaped agricultural fields bounded by hedgerows creating a field pattern that was laid out at the time of the Sowe Inclosure in the mid-18th Century This is currently recorded as fieldscape and settlement, which relates to Hungerley Hall Farm.

2.2.8. The south-western section of the Order Limits is located within HLC Area 9 – East Binley Character Area and is stated in the HLC description to be representative of open land and recreation areas that were previously enclosed fields identified on the 1746 Craven estate map.

2.2.9. The eastern half of the Order Limits is located within Warwickshire, which records, from north to south, the historic landscape characterisation as HWA117 – Large Irregular Fields, HWA116 – Re-organised Piecemeal Enclosure, HWA126 – Coombe Abbey Woods (Western end) that form part of Coombe Abbey Countryside Park, with the majority of this woodland identified on the Ordnance Survey (OS) 1st edition and had previously appears to have been a medieval deer park, and HWA138 – Other Small Rectilinear Fields.

2.2.10. This illustrates that the land surrounding the Order Limits beyond the existing A46 forms part of a historically agricultural landscape that originated in the medieval period. This medieval landscape is no longer visible, as it was largely replaced by a post-medieval field system with no traces of the earthworks representing ridge and furrow cultivation with the Order Limits.

Previous investigations

- 2.2.11. Coventry and Warwickshire HERs record five previous events within the extent of the Order Limits. These predominantly relate to archaeological evaluations:
- ECT37 Coventry Eastern Bypass 4, 1994
 - ECT63: Coventry Eastern Bypass 3 Fieldwalking
 - ECT76: Eastern Bypass Site 3
 - ECT93: Coventry Pipeline Phase 2 (North east)
 - ECT492: EDP 209 Walsgrave Geophysical Survey
- 2.2.12. Results of a geophysical survey (ECT492), previously undertaken in parts of the Order Limits (GSB Prospection. 2006. Geophysical Survey Report 2006/77; EDP 209 Walsgrave, Coventry), have shown potential evidence for small scale sporadic activity of unknown date. In addition to the HER records within the Order Limits, this survey result demonstrates the potential for previously unknown archaeological remains to survive within the area. The HER record text discusses the results and suggest that these remains would most likely be medieval to post-medieval in date and agricultural in nature. If any such remains were to survive, they would derive their significance from their archaeological interest as well as their potential relationship with the Coombe Abbey estate.
- 2.2.13. A further geophysical survey has taken place within the extent of the Order Limits in support of the DCO application (see ES Appendix 6.2 (Geophysical Survey Report) (**TR010066/APP/6.3**)). This identified no anomalies of a possible significant archaeological origin; however, 'green waste' was evident in three of the fields that could mask anomalies with a weaker magnetic signature, yet anomalies suggestive of agricultural activity were able to be identified such as former field boundaries and ridge and furrow cultivation.
- 2.2.14. Following this geophysical survey a scheme of trial trenching took place (see ES Appendix 6.4 (Archaeological Trial Trenching Survey Report) (**TR010066/APP/6.3**)). This identified a single archaeological feature, a potential ditch present in three trenches. This ditch aligned with the former parish boundary which has been identified from 1st and 2nd edition OS mapping. The ditch fill included modern debris indicating that it was extant until relatively recently and is therefore of low significance.
- 2.2.15. There are a further 33 previous events recorded by Coventry City Council and Warwickshire HERs within 1km of the Order Limits. These relate to assessment of Coombe Abbey Park and Caludon Castle and its associated features as well as investigations for Coventry Bypass.

2.3. Archaeological and historical narrative

Prehistoric Period (800,000 BCE – 43 CE)

- 2.3.1. One non-designated heritage asset of Prehistoric date is recorded by Warwickshire HER within 1km of the Order Limits. This relates to cropmarks identified on 2010 Google Earth map, c. 950m east of the Order Limits, of a possible enclosure, ring ditch and linear features 500m north of Coombe Abbey (MWA13379). The possible enclosure is a rectangular shape in plan, with three sides and a possible ring ditch to the north-west. Other linear features were also identified along with ploughed out ridge and furrow. They are provisionally dated to the early Lower Palaeolithic by the HER, however this is more of a quirk of data recording practice, in which some features that are undated are given the earliest date in the data standards. Without field investigation, a conclusive date is not possible but, these possible features likely date to a later time period. Archaeology from the Palaeolithic period is normally represented by chance findspots, rather than more substantial remains of in-situ activity such as settlement sites or burials. Material from the Lower and Middle Palaeolithic is very rare on a national scale.
- 2.3.2. Evidence of the Palaeolithic can also be found in palaeoenvironmental remains which are often preserved in river terrace deposits and alluvium, as are found within the Order Limits. Evidence of this nature has been found at Waverley Wood, c. 8.5km to the south of the Order Limits in the form of five handaxes, several quartzite tools and the remains of a straight-tusked elephant. These remains were found in a palaeochannel which was sealed within the same sand and gravel formation (Baginton) present within the Order Limits.
- 2.3.3. The remainder of the Prehistoric period is not represented within 1km of the Order Limits. Typically, the Mesolithic is characterised by findspots of microliths before the introduction of more substantial remains in the Neolithic and Bronze Age in the form of burials and settlement. However, as the Scheme is located in close proximity to the River Sowe the area would have occupied fertile agricultural land, close to a water course and would therefore have been an attractive location for possible Prehistoric agricultural activity.
- 2.3.4. It is considered that there is a low potential for previously unknown archaeological remains from the Prehistoric period to be present within the Order Limits. This potential is considered to be greater in areas of river terrace gravel deposits, where remains would potentially be of up to Palaeolithic date.

Roman/Romano-British Period (43 CE -410 CE)

- 2.3.5. There is one heritage asset recorded within 1km of the Order Limits that is possibly of Romano-British date. This relates to a cropmark of a possible

Romano-British double-ditched enclosure (MWA19114) identified on modern aerial photography, c. 325m east of the Order Limits. As with the previous mentioned cropmark, an exact date for the cropmark is not possible without field evaluation and could date to an earlier or later time period.

- 2.3.6. There is limited evidence for Roman activity within the city of Coventry. The nearest centre of Roman activity to the Scheme is the Roman fort at The Lunt c. 5.5km south-west of the Order Limits. This fort sits on the Fosse Way which runs from Exeter to Lincoln and crosses through the area now occupied by Coventry. The area surrounding the Scheme was most likely used sparsely during the Roman period with agricultural evidence recorded within the area.
- 2.3.7. The evidence within 1km of the Order Limits demonstrates a limited use of this area for agriculture in the Roman period. The location of the Scheme in the vicinity of the water course and occupying fertile land would suggest this area was attractive for Romano-British agricultural activity but there is, ultimately, limited evidence to support this. As the area was sparsely populated during the Roman period it is considered that there is low potential for previously unknown remains of a Romano-British date.

Early Medieval Period (410 – 1066 CE)

- 2.3.8. The origins of Binley, immediately to the south-west of the Scheme, are believed to have been within the early medieval period, as a Saxon settlement. The placename is derived from Old English, Billa's, meaning well-watered land, and as stated above the River Sowe is within the vicinity of Binley and the Scheme. Binley is recorded within the Hundred of Stoneleigh, which was a Saxon administrative unit.
- 2.3.9. There are five non-designated heritage assets of early medieval date recorded within 1km of the Order Limits. The closest relate to agricultural activity recorded adjacent to the northern boundaries of the Order Limits forming ridge and furrow cultivation of a possible early medieval date (MCT16481 & MCT16482). These are made up of multiple areas, with ridge and furrow identified on 1949 aerial photography, but no traces are now visible within the Order Limits.
- 2.3.10. There are three further non-designated heritage assets recorded within 1km of the Order Limits on Warwickshire and Coventry HERs that possibly date to the early medieval period; two areas of possible early ridge and furrow, and managed woodland.
- 2.3.11. Further agricultural activity was recorded during an evaluation on land off Harry Western Road, c. 725m south-west of the Order Limits, where ditches and ridge and furrow were discovered (MCT15980 & MCT15965). This and the previous

ridge and furrow earthworks suggest that there may have been early medieval agricultural activity within the Order Limits and throughout the area.

- 2.3.12. Binley Common Wood, c. 880m south of the Order Limits, is also considered to be of an early medieval date or earlier (MWA8764). This was composed of a managed woodland or former grazed common wood. A possible medieval 'trench', wood bank, further ridge and furrow cultivation, and evidence of ancient coppicing have also been identified within its confines.
- 2.3.13. It is considered that there is a medium potential for unknown early medieval remains. These would likely relate to agricultural activity.

Medieval Period (1066 – 1500 CE)

- 2.3.14. Binley as well as [Walsgrave-on-] Sowe, c. 820m west of the Order Limits, are recorded within the Domesday Survey. The population of Binley is recorded as 34 households in 1086, meaning that was in the largest 40% of recorded settlement in the Domesday Survey. Sowe represented a smaller settlement of 18 households. Both settlements were split into two owners, likely meaning that there were four former manors within the surrounding landscape. Two of the Domesday records relate to the abbey of St Mary, which was an abbey located within Coventry.
- 2.3.15. All the Domesday records suggest that these areas comprised fertile agricultural land, with ploughlands and plough teams recorded. One record for [Walsgrave-on-] Sowe identified that in 1086 the land was in the ownership of "Richard (the forester)", suggesting that there was at least some woodland here.
- 2.3.16. The geophysical survey undertaken in support of the Scheme has not identified any areas of definitive medieval archaeology. There are areas of ridge and furrow cultivation of unknown date, however there is green waste recorded across the surveyed areas of the Scheme which could be masking archaeological remains of this date.
- 2.3.17. Three designated heritage assets and seven non-designated heritage assets dating to the medieval period are recorded within 1km of the Order Limits. These predominantly relate to agricultural activity, but ecclesiastical and elite-status buildings were also built in the surrounding landscape.
- 2.3.18. Caludon is not recorded on the Domesday Survey as a castle. Its associated features and possible deserted medieval village originated in the 12th century. Caludon Castle is a moated site with associated water management system, c. 860m west of the Order Limits (NHLE 1014044/MCT16469/DCT890). The grade I listed remains of Caludon Castle are located within the moat (NHLE 1076645/MCT16470), for which John Segrave was granted licence to crenellate

in 1305, with the castle established between then and 1354, when another licence was granted. The castle was inherited by Thomas Mowbray, Duke of Norfolk and had fallen derelict by 1398. The castle was rebuilt in 1580 and was again in ruins by the late 17th century, with only a tall sandstone wall with two large arched windows above two smaller windows surviving. The moat is likely to contain structural and artefactual remains of the original 12th century buildings, as well as later rebuilds and additions, as well as possible palaeoenvironmental information preserved.

- 2.3.19. As stated above, the castle and moat were surrounded by other water management features that illustrate the wider setting and the wealth and social status of the occupants of the castle. A fishpond was located to its north-east (MCT1066), while a further moated site was located c. 190m south of Caludon Castle (NHLE 1014045/ MCT16471/ DCT890). This likely represented a secondary associated enclosure and could also contain valuable artefactual and environmental remains.
- 2.3.20. A possible former dam for Caludon Castle is also recorded which likely acted as a bank demarcating the limits of the Great Pool and used to retain water (MCT16473). A medieval deer park is also documented within 1km of the Order Limits, dating to 1279 and was a park of 20 acres but the exact extent of this is currently unknown (MCT1064).
- 2.3.21. The possible site of Caludon deserted medieval village is also recorded. However, no traces remain as it is now covered by extensive housing developments surrounding Caludon Castle (MCT153). Further medieval settlement activity is recorded in the area with another deserted medieval village (MCT635), c. 995m west of the Order Limits at Clifford with two possible further moats in its vicinity (DCT892) and a former manor house, The Laurels (MCT1076). The exact location of which is not clear, with three possible sites and two reputed manors possible.
- 2.3.22. Similar to the Caludon moated sites, a motte and bailey castle is recorded c. 5km east of the Order Limits (NHLE1011368). This castle forms part of the medieval landscape, however it does not share intervisibility with the scheme. This has been tested with a sight-line analysis based on LiDAR DTM and DSM data.
- 2.3.23. Coombe Abbey was also established in the 12th century, c. 1.5km east of the Order Limits (NHLE 1233485), which was formerly a Cistercian Abbey now a country house that has been redeveloped into a hotel. The monastery was founded by Richard de Camville in 1150 and was later improved in the 15th century but was dissolved in 1539.

- 2.3.24. Surrounding Coombe Abbey, small scale industrial and agricultural activity has been recorded. A former windmill at Binley Grange (MCT189), owned by Coombe Abbey c. 845m south-west of the Order Limits, which was built in 1279 and Binley mill (DCT891/MCT160), c. 760m west of the Order Limits, which remained in operation till the 1900s. Multiple regimes of ridge and furrow cultivation have been identified within 1km of the Order Limits. An example is recorded in the woodland of Coombe Abbey Landscape Park to the south of the southern arm of Coombe Pool associated with Coombe Abbey (MWA10100), c. 170m east of the Order Limits. Numerous further instances of ridge and furrow cultivation are recorded within 1km of the Order Limits (see Section 6.3). This illustrates that the Scheme was located in a historic agricultural landscape, since at least the medieval period.
- 2.3.25. In an evaluation at land off Harry Western Road a pit, gully and a hearth feature were recorded (MCT16624 & MCT16625), c. 725m south-west of the Order Limits. The features correspond to the position of a building depicted on the Craven Estate Map of 1746, while sherds of pottery were discovered that date to between the 12th and 14th centuries.
- 2.3.26. It is considered that, due to the amount evidence for medieval activity within 1km of the Order Limits, especially the amount of agricultural activity, that there is a medium potential for further medieval agricultural activity to be present within the Order Limits. This potential covers all undeveloped areas of the Order Limits.

Post-medieval Period (1500 – 1900 CE)

- 2.3.27. The post-medieval period was a time of technological innovation and population growth that required an increase in agricultural productivity. This is illustrated by the amount of heritage assets associated with agricultural activity within 1km of the Order Limits.
- 2.3.28. There are two non-designated heritage assets recorded within the Order Limits dating to this time period. These relate to two records on the Coventry and Warwickshire HERs that represent the same former feature, a post-medieval turnpike road, running east to west from Market Harborough to Coventry following the same trajectory as the B4428 in the southern part of the Order Limits (MCT15261; MWA4788).
- 2.3.29. There are a further 11 heritage assets within the Order Limits which have been identified during the historic map regressions. These form five historic hedgerows (HA001-HA005), a former field system (HA006), a former orchard (HA007), two former ponds (HA008), a stream (HA009), a former road (HA010), and a former gravel pit (HA011).

- 2.3.30. The geophysical survey has identified agricultural anomalies in the form of ridge and furrow which have the potential to date to this period. The survey identified considerable green waste across the Scheme which could be masking post-medieval remains. The scheme of trial trenching has not identified this ridge and furrow or any masked post-medieval remains.
- 2.3.31. There are 115 heritage assets are recorded within 1km of the Order Limits that date to this time period. These relate to 25 designated heritage assets representing one grade I, two grade II* and 21 grade II listed buildings as well as a grade II* registered park and garden/conservation area.
- 2.3.32. The registered park and garden relates to Coombe Abbey (NHLE1000408), adjacent to the eastern boundary of the Order Limits. As stated above, the Cistercian abbey was dissolved in 1539. The former estate was granted to Mary, Duchess of Somerset and Richmond, who then conveyed it to John Dudley, later Duke of Northumberland. The estate was later sold in 1557 to Robert Kelway, who on his death in 1581 passed the estate to his daughter, Elizabeth, the wife of John Harington of Exton. The former monastic buildings of the abbey were converted into a substantial country house. In 1613, John Harington died and left Coombe to his sister, who subsequently sold it to a former Lord Mayor of London, Sir William Craven. The heir of Sir William Craven, with the architect William Winde, rebuilt portions of the north range of the house, built a new north-west range and made modifications to the existing formal gardens.
- 2.3.33. The building works were completed in 1689 but developments continued with an ornamental parterre, flower bed, stretching south from Jacobean Garden to the east of the house depicted on a 1707 drawing by Kip. There were no further alteration to the house and gardens until 1771, when the 6th Lord Craven commissioned Lancelot "Capability" Brown to landscape the park. The formal late 17th century gardens were removed to create lawns, in front of the house, while Smite Stream was dammed to create the 77 acre lake in the west of the park, while several new buildings were built, designed by Henry Holland. These building included the Menagerie Farm buildings to North-west Of The Woodlands (NHLE 1233663/MWA20536), The Woodlands hunting lodge (NHLE 1233533), Wall To North Of The Woodlands, Combe Abbey And Attached Farmbuildings (NHLE 1276493), West Lodge (NHLE 1233532/MWA3726), and Boat House On South Side Of The Pool, Combe Abbey (NHLE 1276492). All these contributed to the aesthetics of the parkland surrounding Coombe Abbey. Other listed buildings within Coombe Abbey, outside the 1km buffer, also contribute to the aesthetics of the parkland here.
- 2.3.34. At a similar time to the alteration to the Coombe Abbey, between 1771-3, the grade I Church of St Bartholomew was built by William Lord Craven of Coombe Abbey attributed to Robert Adam (1076629/MCT672/MCT15387), c. 820m west

of the Order Limits. Later projects and schemes within Coombe Abbey were commissioned in the 19th century to modify the house and some alteration to the garden to the north carried out by William Miller. These and the previous landscaping conducted by Lancelot Brown formed the foundation of the current grade II* Coombe Abbey registered park and garden/conservation area.

- 2.3.35. As stated above, Caludon Castle fell into ruins during the post-medieval period. However, Caludon House (MCT1065), a brick-built building on a stone plinth, was in existence by 1788 at the same location. By c.1800, a farmhouse was built that possibly used stone from the castle but, was demolished after 1964 due to the building being in a poor state of repair.
- 2.3.36. The grade II listed Hungerley Hall Farm (NHLE 1265694/MCT112), and its associated grade II listed Barn Approximately 50 Metres north of Hungerley Hall Farmhouse (NHLE 1226789/MCT79), and Granary, Cowshed and Stable Range Approximately 15 Metres north-west Of Hungerley Hall Farmhouse (NHLE 1265638/MCT80) are the closet listed buildings to the Scheme and are surrounded by the Order Limits. The farmhouse was constructed in the late 17th century/ early 18th century and has later additions, the grade II listed barn, granary, cowshed and stable range date to the mid to late 18th century. Historic mapping dates the garden wall, yard wall and brick-built barn included within the curtilage listing of the farmhouse to the mid to late 19th century. It is likely that these structure pre-date these maps. The metal pole barn also included within the curtilage listing of the farmhouse dates to the mid-20th century.
- 2.3.37. The remaining listed buildings within 1km of the Order Limits are characterised by agricultural buildings in the surrounding landscape, with some residential dwellings towards the urban areas. Similarly, the remaining non-designated heritage assets reflect a mainly agricultural landscape, with a large quantity relating to agricultural features such as farmsteads, field systems, claypits and ponds. They also illustrate the advancements of the post-medieval period with roads, bridges and industrial sites attested (see Section 6.3.).
- 2.3.38. The 1887 First Edition Ordnance Survey (OS) map (Illus. 2-3) reflects this landscape within the Order Limits, depicting the area within the Order Limits as being subdivided into 26 agricultural fields (HA001-HA006). Five of these field boundaries are classed as important hedgerows. One is the line of a post-medieval, if not earlier, parish boundary. This parish boundary has been identified during the scheme of trial trenching. It has been infilled with modern debris so was likely extant until relatively recently.
- 2.3.39. The Order Limits are bisected by two roads, one in the north (HA010) and one in the south, the aforementioned turnpike road (MCT15261; MWA4788). A stream (HA009) traverses the Order Limits from The Pool of Coombe Abbey and continues to the River Sowe.

Plate 2. 1887 OS Map, 1:2,500

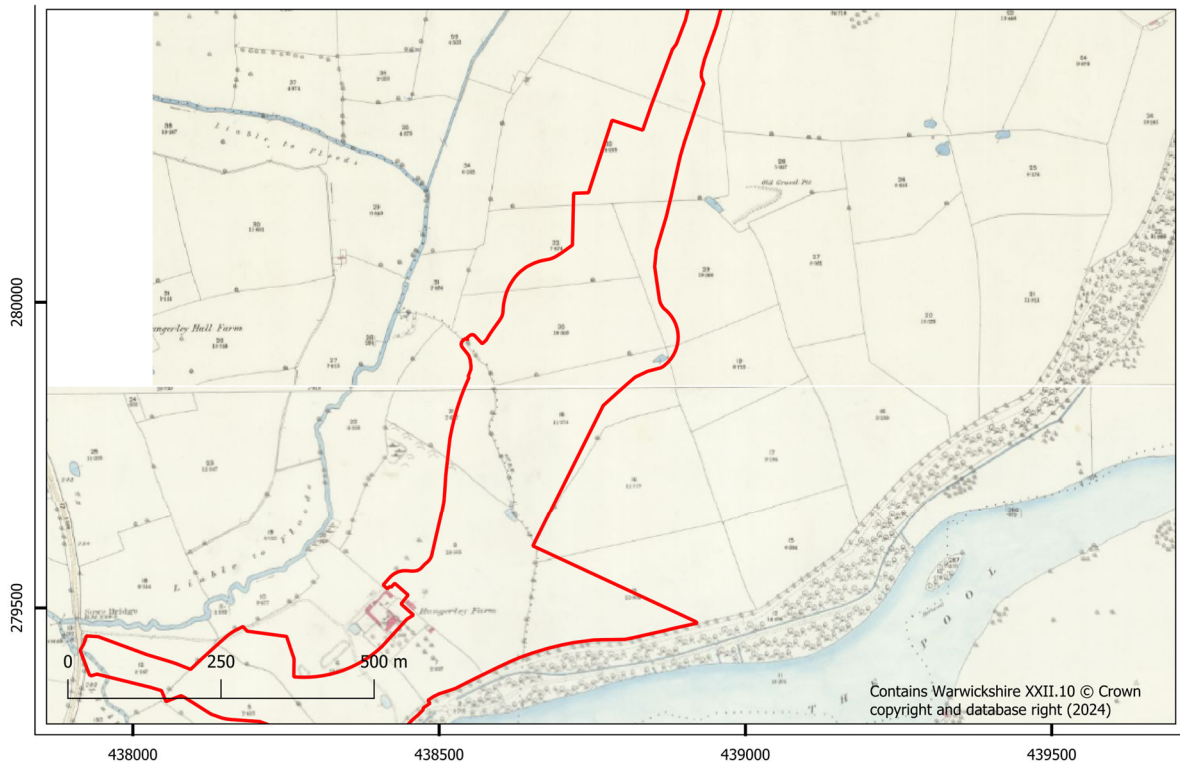
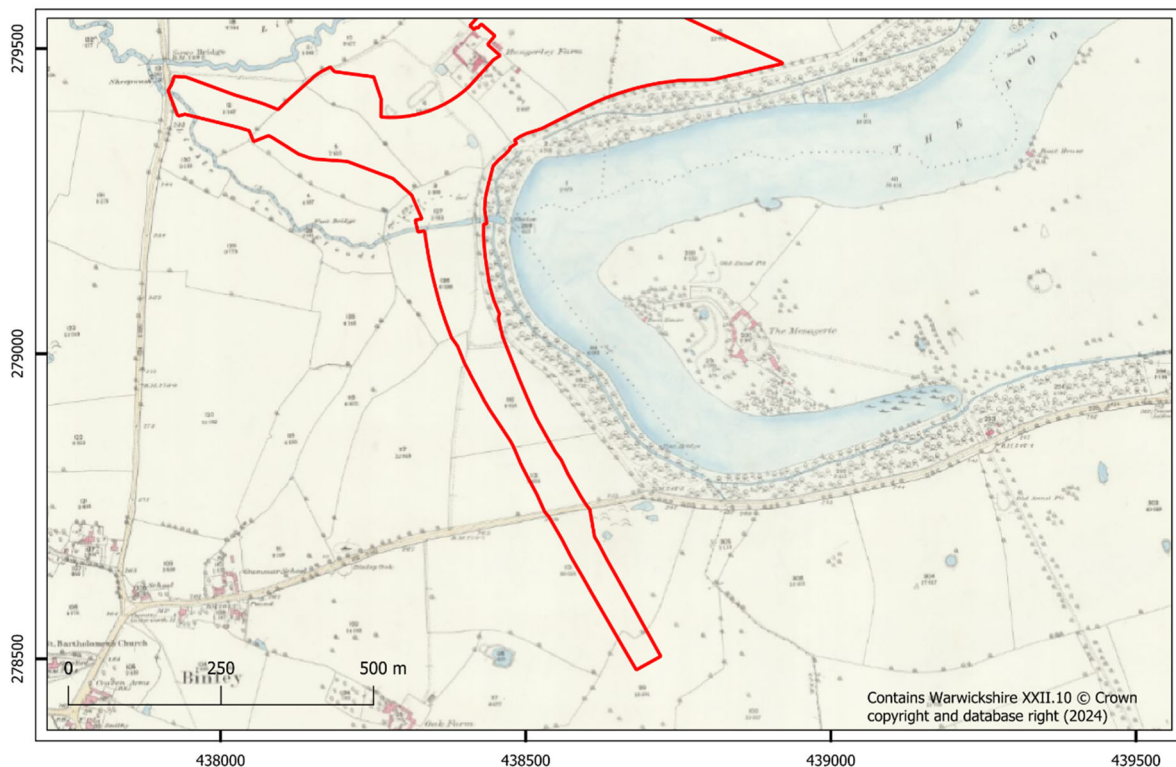


Plate 3. 1887 OS Map, 1:2,500

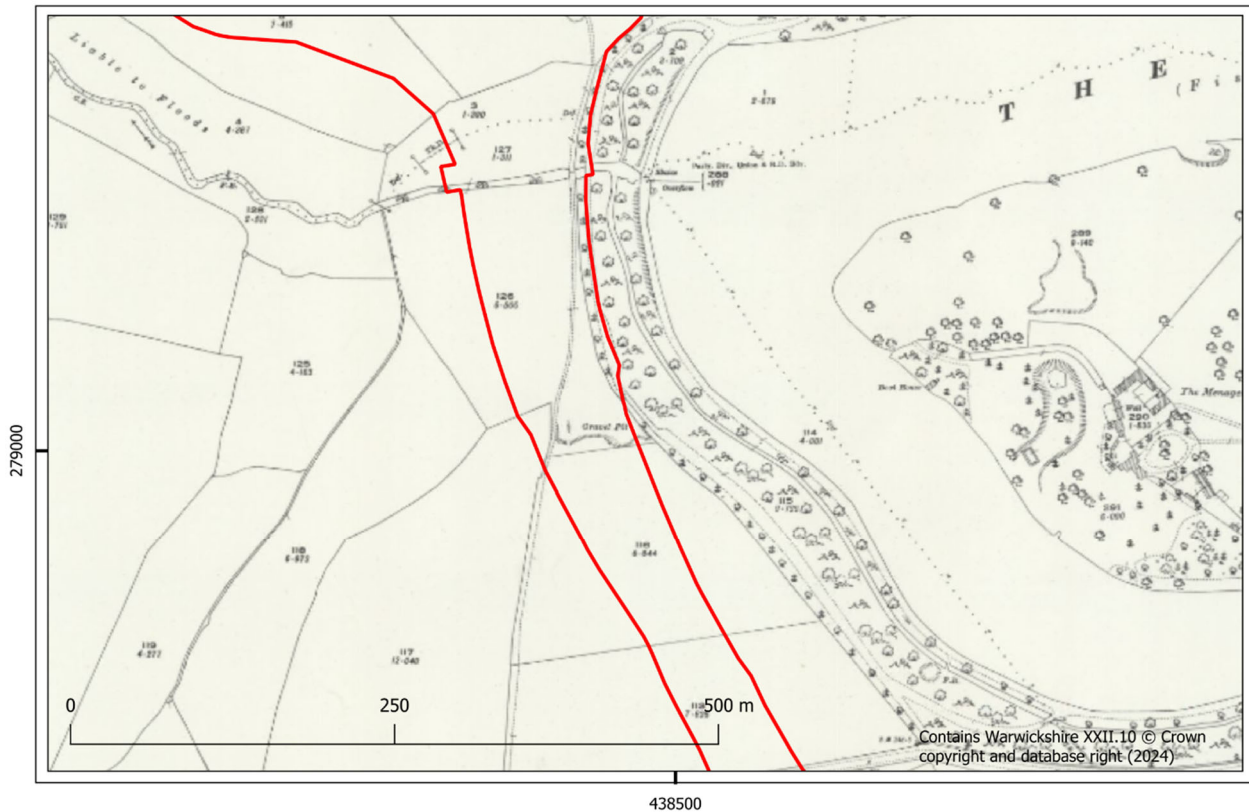


- 2.3.40. In the centre of the Order Limits, an orchard (HA007) is depicted to the south-east of Hungerley Hall Farm. Two ponds have also been depicted within the Order Limits (HA008).
- 2.3.41. It is considered that there is a medium potential for unknown archaeological remains dating to the post-medieval period. These remains are likely to be agricultural in nature, due to the Scheme being located within a historical agricultural landscape. This potential applies to all areas of the Order Limits which have not been previously disturbed by the construction of existing infrastructure. There is also considered to be greater potential for previously unknown archaeological remains of a domestic nature to survive within the area surrounding Hungerley Hall Farmhouse.

Modern (1900 CE – present)

- 2.3.42. There are no heritage assets recorded within the Order Limits dating to the modern period.
- 2.3.43. Seven non-designated heritage assets are recorded within 1km of the Order Limits dating to the modern period. These predominantly relate to activity during the Second World War, with the former sites of Binley Camp MCT2264, Binley Anti-Aircraft Battery MCT2248 recorded.
- 2.3.44. No changes are depicted on 1900-1906 OS map (Illus. 4) apart from the removal of the orchards to the south-east of Hungerley Hall Farm. The 1915-1931 OS map introduces a gravel pit (HA011) that is located in the south of the Order Limits and is depicted until between 1962 and 1969, when the pond to the south of Hungerley Hall Farm is also infilled.

Plate 4. 1925 OS Map, 1:2,500



- 2.3.45. The historical map regression shows that few changes occurred within the area covered by the Order Limits during the modern period until 1990-1995 when the A46 was constructed and the field boundaries within the Order Limits were reduced and ponds infilled.
- 2.3.46. It is considered that there is a low potential for unknown archaeological remains relating to the modern period to be present within the Order Limits, although former mapped features were identified within the Order Limits. These represent former post-medieval field boundaries or ponds or features identified within the area disturbed by the extant A46.

2.4. Methodology for impact assessment

- 2.4.1. In addition to DMRB criteria, the following methodology has been used as a guide for professional judgement.
- 2.4.2. The assessment of value/sensitivity derives from a combination of designation status and professional judgement. The Secretary of State's non-statutory criteria for the scheduling of ancient monuments assessment criteria adopted by Historic England as part of the Monument Protection Programme (MPP), and the Secretary of State's Principles of Selection for Listing Buildings (DCMS 2018), are considered as part of this assessment.

- 2.4.3. Within national planning policy and guidance, the value attributed to a heritage asset is referred to as its “significance”. To prevent confusion with EIA terminology regarding “significance of effect” this assessment will use the phrase “heritage value” in place of “significance” when referring to heritage assets. The definition attributed to “heritage value” remains unchanged from that attributed to “significance” in national planning policy and guidance.
- 2.4.4. The assessment has also considered that occasionally some heritage assets have a lower or higher than normal value/sensitivity within a local context. In addition, the assessment process has considered the component of the heritage asset that is being affected and the ability of the heritage asset to absorb change without compromising the understanding or appreciation of the resource.
- 2.4.5. It is worth clarifying that the terminology of “Value/Sensitivity” is a measure of the relative importance of an asset and should not be confused with the sensitivity to change or certain types of change within any one asset. For instance, a particular (theoretical) grade I listed building where its importance is bound up with a small amount of ancient fabric, but where its wider setting is relatively unimportant, might not be highly sensitive to change in the surrounding landscape. This kind of sensitivity is addressed as part of the assessment of magnitude of impact.
- 2.4.6. Table 1 below summarises the approach to value/sensitivity set out above. It is not exhaustive.

Table 1: Criteria for assessing Value/Sensitivity

Value/Sensitivity	Typical criteria
Very high	World Heritage sites, assets of acknowledged international importance, assets that can contribute significantly to acknowledged international research objectives.
High	Scheduled monuments, grade I and II* listed buildings, grade I and II* registered parks and gardens, registered battlefields, undesignated assets of schedulable quality, undesignated monuments, sites or landscapes that can be shown to have specific nationally important qualities and assets that can contribute significantly to national research objectives. Grade II listed buildings can also be of high value and are assessed on an individual basis
Medium	Grade II listed buildings, grade II registered parks and gardens, conservation areas, undesignated sites of high importance identified through research or survey, monuments or sites that can be shown to have important qualities in their fabric or historical association. Locally listed buildings can be of medium or low value and are assessed on an individual basis
Low	Undesignated assets - buildings, structures, monuments or archaeological sites with a local importance for education or cultural appreciation, and which add to local archaeological and historical research. Very badly damaged assets that are of such poor quality that they cannot be classed as high or medium, parks and gardens of local interest. Locally listed buildings can be of medium or low value and are assessed on an individual basis

Value/Sensitivity	Typical criteria
Negligible	Heritage resources identified as being of little historic, evidential, aesthetic or communal interest, resources whose importance is compromised by poor preservation or survival or by contextual associations to justify inclusion into a higher grade.

2.4.7. The assessment of the degree of impact on the heritage asset from the Scheme has been guided by the criteria outlined in Table 2. This sets out the criteria taken from DMRB LA104, reframed to clarify for heritage impacts, based on professional experience.

Table 2: Criteria for assessing magnitude of impact

Magnitude	Criteria
Major adverse	Total loss or fundamental alteration to heritage asset's significance or setting. Addition of new features that substantially alter the setting of a heritage asset.
Moderate adverse	Partial loss or alteration to a heritage asset's significance or its setting. Addition of new features that partially alter setting of a heritage asset to the extent where the significance is impacted.
Minor adverse	Minor loss of an element of a heritage asset or its setting. Addition of new features that form largely inconspicuous elements in the setting of a heritage asset to the extent that its significance is slightly impacted.
Negligible adverse	Very minor loss of elements of a heritage asset or its setting. Addition of new features that do not alter the setting of a heritage asset.
No change	No change to the heritage asset.
Negligible beneficial	Very minor enhancements to the heritage asset or its setting that help slightly better reveal the assets heritage value.
Minor beneficial	Changes that have a limited benefit to the heritage value of the asset. Changes to the setting of the asset which have a slight beneficial impact on heritage value and enhance the ability to understand the asset its historic context and setting.
Moderate beneficial	Changes that are beneficial to the heritage value of the asset. Changes that result in the setting of the asset being noticeably enhanced and improving the ability to understand the asset and its historic context and setting.
Major beneficial	Changes that are extremely beneficial to the value of the asset. Comprehensive changes to the setting of the asset which greatly reveal and enhance its heritage value.

2.4.8. The significance of effect will be established by combining the assessment of both the value/sensitivity of a heritage asset with the magnitude of the impact as described in DMRB LA104. In accordance with DMRB, moderate, large or very large effects are considered significant.

Table 3. Criteria for assessing Significance of Effect (taken from DMRB LA104 table 3.8.1)

	Magnitude of Impact (degree of change)					
		No Change	Negligible	Minor	Moderate	Major
Heritage Value	Very High	Neutral	Slight	Moderate/Large	Large/Very Large	Very large
	High	Neutral	Slight	Moderate/Slight	Moderate/Large	Large/Very Large
	Medium	Neutral	Neutral/Slight	Slight	Moderate	Moderate/Large
	Low	Neutral	Neutral/Slight	Neutral/Slight	Slight	Slight/Moderate
	Negligible	Neutral	Neutral	Neutral/Slight	Neutral/Slight	Slight

- 2.4.9. The assessment has considered both designated and non-designated heritage assets, including listed buildings, non-designated below-ground archaeological remains, locally recorded historically important buildings, locally important buildings or structures identified during survey work, and historic landscapes.
- 2.4.10. Direct and indirect (both temporary and permanent) construction and operational effects on heritage assets have been considered in this assessment. Temporary effects will be from construction related activities and could include effects on an asset's setting through increased noise or visual intrusion, whereas permanent effects can be either physical effects on the integrity of the asset or effects on their setting. Direct effects result directly from the Scheme and are the main type of effect, including changes to setting and physical removal of remains. Indirect effects result from the Scheme but, removed by a causal step.
- 2.4.11. The following impact assessments review any potential impact of the Scheme on both designated and non-designated heritage assets above and below ground within the study area.

2.5. Assessment of value/sensitivity

Table 4 Assessment of value/sensitivity

Note: Descriptions quoted from national and regional data sources may contain notation in the form “statement?” or “?statement?”. This is a standard notation in archaeological research to denote an interpretation that is inherently uncertain or a “best guess” pending further investigation.

The notation: C followed by numerals, denotes centuries CE e.g., C17 is the 17th century CE

Reference Number	Designation	Name	Description	Easting	Northing	Period	Value/ Sensitivity
1014044/ MCT16469/ DCT890/ MCT16473	Scheduled Monument	Caludon Castle: a moated site and part of an associated water management system	Caludon Castle is a well preserved example of a moated site together with an associated water management system. The moated site will retain structural and artefactual evidence for both the original house which existed here from the end of the 12th century, for the later rebuilding and additions in the mid- 14th century, and for the additions made during the early post-medieval period. The moat ditches and the sample section of the floor of the pool will retain both artefactual and environmental information regarding the occupation of Caludon Castle and for the economy of its inhabitants as well as the landscape in which it was set. Additionally the existence of the pool to the north of the moated site provides evidence for the wider setting of the house, and thus an insight into the way in which the wealth and social status of its occupants in the medieval and early post-medieval periods was made manifest. The interest of Caludon Castle is enhanced by the survival of contemporary documentary records which relate to the site's ownership and the buildings that existed here. As a monument which is open to the public, Caludon Castle serves as a valuable educational and recreational resource.	437386	280163	Medieval	High

Reference Number	Designation	Name	Description	Easting	Northing	Period	Value/ Sensitivity
1014045/ MCT16471/ DCT890	Scheduled Monument	Moated site 190m south of Caludon Castle	The moated site 190m south of Caludon Castle is a well preserved example of this class of monument and is unencumbered by modern development. The moated island will retain structural and artefactual evidence for buildings and other structures which originally existed, including evidence of their form, date and function. The moat ditches, which have silted naturally, will contain both artefactual and environmental information relating to the site's occupation and illustrating the landscape in which it was used. The ruins, earthwork and buried remains of Caludon Castle, a high status residence which was originally constructed in the late 12th century and occupied through to the late 17th century, are situated to the north of the moated site. These remains are the subject of a separate scheduling. A relationship with Caludon Castle is highly likely, and the moated site to the south was probably a secondary associated enclosure of similar date.	437404	279961	Medieval	High
1000408/ MWA3740/ MWA7071	Grade II* Registered Park and Garden/Conservation Area	Combe Abbey	Late C18 park landscaped by Lancelot Brown with structures designed by Henry Holland, together with mid and late C19 formal gardens laid out by William Andrews Nesfield and William Miller which incorporate elements of late C16 and early C17 formal gardens.	440090	279514	Post-Medieval	High
1076645/ MCT16470	Grade I Listed Building	Remains of Caludon Castle	Circa 1354, or earlier. John Segrave was granted a licence to crenellate 1305. Another licence granted 1354. Descended to Thomas Mowbray, Duke of Norfolk. Fell into dereliction after his banishment 1398. Rebuilt circa 1580 by Henry Lord Berkeley. Ruined by the later C17. Sole remaining fragment consists of tall sandstone wall containing 2 large pointed arched windows above 2 smaller. Remnants of stone window tracery.	437379	280159	Medieval	High

Reference Number	Designation	Name	Description	Easting	Northing	Period	Value/ Sensitivity
1034896/ MWA2847	Grade II Listed Building	Old Lodge Farmhouse	Farmhouse, Early C17 with large late C19 addition to rear. Flemish stretcher bond brick with some flared headers, and sandstone dressings. Old plain-tile roof; large brick external stack to rear.	439553	278295	Post- Medieval	High
1034897	Grade II Listed Building	Old Lodge Farm, Barn approximately 10 Metres South of Farmhouse	Barn. C17 with C19 rebuilding. Timber framed with brick infill; largely rebuilt in brick. Old plain-tile roof. 5 bays. Double-leaf plank doors. Left return side has plank door with wood lintel. Interior has C19 brick buttresses to central bay. Trenched purlin queen strut roof has renewed struts. Included for group value.	439570	278266	Post- Medieval	High
1076629/ MCT672/ MCT15387	Grade I Listed Building	Church of St Bartholomew	1771-3 for William Lord Craven of Combe Abbey. Nave with sanctuary apse, recessed west porch. Attributed to Robert Adam, Ashlar, cement slurry. North transept leading to vestry with semicircular ends. Coved ceiling with garlands and medallions in relief. Similar wall decoration. East end niches flanking alabaster columns, Tower of the Winds capitals. Greek Ionic alabaster north screen. Madonna and Child east window. West gallery.	437728	278493	Post- Medieval	High
1076630/ MCT673	Grade II Listed Building	The Vicarage	Late C18 west block. Cement rendering, hipped Welsh slated roof. 2 storeys, 2 full height canted bays, sash windows with glazing bars. Cornice. Early front block, C16, altered. 2 storeys, 2 gables on right. Casement windows. C19 porch with ornamental bargeboards. Interior: C16 stone chimneypiece. Very fine mid C18 chimneypiece, carved wood, Rococo design, in drawingroom.	437675	278559	Post- Medieval	High
1076631/ MCT683	Grade II Listed Building	1 and 2, Brinklow Road	C17 refaced C18 with C19 back wing. Timber frame, whitewashed brick nogging. Tiled roof. Front of whitewashed brick with 1st floor band. 2 casement windows, ground floor cambered arches. Back wing of red brick, casement window with glazing bars, bracketed doorhood.	437945	278578	Post- Medieval	High

Reference Number	Designation	Name	Description	Easting	Northing	Period	Value/ Sensitivity
1076632/ MCT694	Grade II Listed Building	6, Brinklow Road	Late C16 or early C17. Timber frame, whitewashed brick nogging. Tiled roof. 2 storeys, casement window with glazing bars. Single storey back wing. 1 building with No 8.	438023	278577	Post-Medieval	High
1076633/ MCT705	Grade II Listed Building	8, Brinklow Road	Late C16 or early C17. Stone plinth, timber frame with gable end to road, red brick nogging. 2 storeys and attic, casement window with glazing bars.	438032	278577	Post-Medieval	High
1076634/ MCT716	Grade II Listed Building	10 And 12, Brinklow Road	C16, refronted with red brick, No 10 refaced with whitewashed pebbledash. Tiled roof. Timber frame exposed at left angle and side elevation. 1 storey and attics, 2 casement windows flush set, cambered arch and glazing bars and louvered shutters on left. Gabled C19 casement dormer on right.	438037	278576	Post-Medieval	High
1087021/ MCT909	Grade II Listed Building	Stoke House	Early to mid C19, Stucco, Welsh slated roof. 3 storeys, 1st floor simplified entablature; frieze and bracketed cornice at eaves. 3 sash windows with glazing bars, central 1st floor pediment on consoles. Doric closed porch with pilasters.	437163	279034	Post-Medieval	High
1226789/ MCT79	Grade II Listed Building	Barn Approximately 50 Metres North Of Hungerley Hall Farmhouse	Barn. Mid C18. Red brick with some decorative flared headers. Plain-tile roof. Brick plinth. Central double doorway. Opening to upper right. Interior: 4-bay tie-beam truss roof with double trenched purlins and coupled rafters.	438422	279528	Post-Medieval	High
1233531	Grade II Listed Building	Walsgrave Hill Farmhouse	Late C18. Brick, with C20 tile roof and brick stack to ridge. 2 storeys plus attic; 3-window range. C19 part-glazed door with overlight within C19 brick porch. To left and right of ground and first floors 24-pane, 3-light casements, those to ground floor with gauged brick arches, those to first floor with segmented brick arches. 16-pane, 2-light casement above door. Gabled dormers with C20 casements. The house rests upon a plinth and has a first floor storey band. Brick dentilled eaves cornice. C19 one-bay extension	439389	280853	Post-Medieval	High

Reference Number	Designation	Name	Description	Easting	Northing	Period	Value/ Sensitivity
			abutted to left of 2 storeys. C18 wing to rear. Interior: some chamfered beams, with stops.				
1233532/ MWA3726	Grade II* Listed Building	West Lodge	House, formerly lodge. Late C18. Sandstone ashlar with some brick to ends. Lead roof removed. Brick stacks to ends. 2 storeys; 2-window range, with one-storey, one-bay wings to left and right. In style of a Roman triumphal arch. Central archway. To left and right a round-headed sash of 12-panes, with further 12-pane sashes to wings with wedge lintels. Above round-headed sashes to left and right a blind window with wedge lintels. Flanking arch, and to corners of main range, Corinthian pilasters supporting entablature. Plinth, and first floor storey band. Parapet to flanking wings. Urns to left and right corners of main range decorated with festoons.	439609	278948	Post-Medieval	High
1233533	Grade II* Listed Building	The Woodlands	Hunting Lodge, now house. Late C18 with C19 additions. Probably by Capability Brown. Sandstone ashlar, with some brick. Slate and lead roofs with ashlar stacks. Complex plan of polygonal wing to left, centre range and projecting cross-wing to right. 2 storeys; 5-window range. C20 plank door within hexagonal porch with wood modillion eaves cornice. 12-pane unhorned sashes to ground floor of left polygonal range, to right of door and to front of wing to right. One blind window to right facade of wing. 9-pane unhorned sashes to first floor of polygonal range, those to main range and right wing with keyblocks. Plinth and first floor storey band. Stone modillion eaves cornice. Interior: some panelled, some plank doors. One chamfered beam with ogee stop.	438862	278998	Post-Medieval	High
1233663/ MWA20536	Grade II Listed Building	Menagerie Farmbuildings To North West Of The Woodlands	Menagerie farmbuildings. c1778. Built to serve the Menagerie designed by Lancelot (Capability) Brown. Red brick with plain tile roofs. Two 1-plan ranges linked by a gate. The larger northern range has a 2 storey wing to the west, with 4 segment-headed carriage arches, that to the	438866	279075	Post-Medieval	High

Reference Number	Designation	Name	Description	Easting	Northing	Period	Value/ Sensitivity
			right with double plank doors. Beyond to the right a stable door flanked by single 2-light glazing bar casements all with segment heads. Above 3 tall 2-light glazing bar casements to the eaves. Beyond to the right a slightly set back lower range with a single stable door. This range continues at right angles with a further stable door and becomes single storey with two stable doors and a shuttered opening between. The smaller southern range, single storey, with the 2 cart entrances to the north range, and 2 bricked-up cart shed entrances to the south range that to the left with a 3-light glazing bar casement. Beyond a single plank door flanked by single light glazing bar casements. These buildings are extremely rare, they were built to store food and bedding for the animals in the Menagerie, and they also provided space for sheltered winter accommodation for these exotic beasts.				
1233703	Grade II Listed Building	Wall To South Of The Woodlands Combe Abbey	Boundary wall. c1770-78, with later alterations. By Lancelot (Capability) Brown. Red brick with coping in part and remains of bases for urns. This wall extends south-east of The Woodlands (qv) to the edge of The Pool and is approx 2-3m in height but has the occasional gap or area of collapse. The wall was originally built by Brown together with that to north (qv) of The Woodlands to cut off the area of land bordering The Pool which he had formed into a Menagerie. The area is named as such and the wall is shown in a plan of 1778.	438948	278945	Post-Medieval	High
1265638/ MCT80	Grade II Listed Building	Granary, Cowshed And Stable Range Approximately 15 Metres North West Of Hungerley Hall Farmhouse	Granary, cowshed and stable range. Mid/late C18, the stable with early C19 roof. Red brick with plain-tile roofs. L-plan, stable projecting forward on right. 2-storey granary to left has double and single doors, brick dentilled eaves and doorway to granary on left-end. Single-storey cowshed to centre has 4 stable doors. 2-storey stable has stable door to centre, blind window above and a shuttered window either side on both floors. Lean-to on left end, loft	438389	279499	Post-Medieval	High

Reference Number	Designation	Name	Description	Easting	Northing	Period	Value/ Sensitivity
			door on right end. Interiors. Granary has 2-bay roof with coupled rafters, old purlins and brick partition. Cowshed has 8-bay roof with chamfered ties, clasped principals and trencled overlapping purlins. Plank ridge. Stable has hay loft, chamfered beams with run-out stops and early C19 3-bay king-post truss roof.				
1265694/ MCT112	Grade II Listed Building	Hungerley Hall Farmhouse	Farmhouse. Probably late C17/early C18 with mid C18 extensions and late C18/ C19 alterations. Red brick with plain-tile roof and brick ridge and end stacks. Complex plan. Main front faces garden. 2 storeys and cellar. 4-window range of 3-light casement windows the 2 to centre under brick cambered arches. Under these the door within wooden lattice porch with gabled hood. Similar 3-light casement to right and 2-light to left. Two 2-light casement to far right. Blocked window to far left, where also 1st floor band. The differences in brickwork together with interior evidence suggest that a timber-framed 3-unit-plan house was extended on either end in brick in mid C18, then the framing refronted in brick late C18/early C19 and then the section of roof to centre and left slightly raised mid C19. The rendered left end has a 4-light casement with 3-light over, and the right end various casements, lean- to and steps leading to 1st floor doorway. Rear has mainly 3-light casements, and a cross-wing projecting to centre-left with a 2nd span extension to its left, gable facing left. Further single-storey extension to centre right with doorway to left and small canted bay to right of it. Interior: chamfered beams; open fireplace and bressumer, Cellar has brick thravls. Plank door and 2-panel door on 1st floor, together with hood to open fireplace, timber- framed partition) old floor boards, a 2nd fireplace hood and wall posts.	438427	279476	Post- Medieval	High

Reference Number	Designation	Name	Description	Easting	Northing	Period	Value/ Sensitivity
1276492	Grade II Listed Building	Boat House On South Side Of The Pool, Combe Abbey	Boat House on South side of The Pool, Combe Abbey - II Boathouse. c1770-78, with later alterations. Probably by Lancelot (Capability) Brown. Red brick and plain-tile roof. Single storey. Open ended to The Pool and entrance door opposite. King-post roof construction possibly early C19. The boathouse is marked on a plan of 1778.	439334	279334	Post-Medieval	High
1276493	Grade II Listed Building	Wall To North Of The Woodlands, Combe Abbey And Attached Farmbuildings	Boundary wall. c1770-78, with later alterations. By Lancelot (Capability) Brown. Red brick with coping in part. This wall extends north and north-west of The Woodlands (qv) to the edge of The Pool and is approx. 3m in height but has the occasional gap or area of collapse. The wall was originally built by Brown together with that to south (qv) of The Woodlands to cut off the area of land bordering The Pool which he had formed into a Menagerie. The area is named as such and the wall shown in a plan of 1778. Attached to the western side of this wall a range of single storey outbuildings. Red brick with plain tile roofs and a single ridge stack. Central range has to right 2 doorways with plank doors flanked by single 2-light glazing bar casements. Set back to right a remodelled C19 wing. Set back to left an original wing with 2 plank doors and two 2-light casements. These buildings were built to serve the Menagerie, to provide feed storage and winter quarters for the exotic animals kept here.	438841	279057	Post-Medieval	High
1335842/ MCT912	Grade II Listed Building	14, School House Lane	C16 or early C17. Timber-frame, whitewashed plaster infilling, medieval tiled roof. 2 casement windows with segmental heads, metal glazing bars. 2 nailed and boarded doors.	438044	280783	Post-Medieval	High
1342892/ MCT854	Grade II Listed Building	White House	Early to mid C19 front to earlier house. Whitewashed brick, Welsh slated roof. 2 storeys, 5 sash windows with glazing bars in reveals, ground floor cambered arches. 6 fielded panel door, oblong fanlight with glazing bars, slim reeded pilasters, simplified entablature.	438024	280748	Post-Medieval	High

Reference Number	Designation	Name	Description	Easting	Northing	Period	Value/ Sensitivity
1342904/ MCT669	Grade II Listed Building	22, Brandon Road	C18. Red brick, tiled roof. 2 storeys, 3 flush casement windows with glazing bars under rusticated stone lintels. Glazed C19 porch.	437791	278325	Post-Medieval	High
1342922/ MCT671	Grade II Listed Building	34, Brandon Road	C17 or earlier, slightly altered. Whitewashed pebbledash, old tiled roof. 2 storeys, 3 casement windows with glazing bars. Timber framework exposed internally.	437826	278281	Post-Medieval	High
1365086/ MWA2846/ MCT732	Grade II Listed Building	The Cocked Hat Restaurant And Hotel, Binley Common House	Farmhouse, now restaurant and hotel. Late C17 with mid/late C19 additions and alterations, and late C20 alterations. Flemish bond brick with sandstone splayed plinth, moulded string course and alternating quoins. Plain-tile hipped roof has deep eaves. Large brick left end and right external stacks have gables and roofs and partly-rebuilt shafts. U-plan with wings to garden to rear. 2 storeys and attic; 4-window range. Symmetrical fronts. C20 moulded 6-panelled door in simple painted moulded stone doorcase with heavy dentil cornice. Painted stone chamfered cross windows have glazing bars. Outer bays are widely spaced. 4 hipped roof dormers have C20 two-light casements with glazing bars. C19 single-storey wing at right angles on left has end stack. Late C20 windows. Right external stack has moulded stone string course and cornices. Garden front of 4 bays. Recessed centre has late C20 six-panelled door. Painted moulded stone eared architrave has pulvinated frieze and pediment. Panel of sandstone blocks above. Flanking windows. Late C20 top-hung sashes throughout have brick flat arches with painted keystones to centre, and C19 rusticated painted rendered flat arches to wings. Wings have C19 canted bays to ground floor. Four C20 two-light nipped roof dormers. Small C19 single-storey range at right angles on right. Interior is altered, but retains dog-leg staircase with turned balusters.	438691	277639	Post-Medieval	High

Reference Number	Designation	Name	Description	Easting	Northing	Period	Value/ Sensitivity
MWA13379	Non-designated heritage asset (Warwickshire HER)	Cropmarks of a possible enclosure, ring ditch and linear features 500m north of Combe Abbey	On the 2010 google earth map three sides of a rectangular enclosure with a possible ring ditch to the north-west is visible. Other linear features are also visible along with ploughed out ridge and furrow.	439995	280584	Early Lower Palaeolithic	Low
MWA19114	Non-designated heritage asset (Warwickshire HER)	Possible Roman enclosure, Coombe Abbey	A double-ditched enclosure visible on modern aerial photography, possibly Roman or medieval date.	439222	279813	Romano-British to Medieval	Medium
MWA8764	Non-designated heritage asset (Warwickshire HER)	Binley Common Wood	Binley Common Wood, a Medieval (and probably earlier) managed woodland; former grazed common wood. The woodland comprises: woodbanks; a possible Medieval "trench"; an area of ridge and furrow and evidence of ancient coppicing.	438872	277553	Early medieval	Low
MWA8277	Non-designated heritage asset (Warwickshire HER)	Ridge and furrow, Coventry Eastern Bypass Site 4	The remains of Medieval ridge and furrow cultivation which survived as earthworks. Much of the ridge and furrow has been destroyed by recent road building and pipeline installation. The site is located north west of Walsgrave Hill.	439199	280702	Medieval	Low
MWA10100	Non-designated heritage asset (Warwickshire HER)	Area of ridge and furrow in Coombe Abbey Landscape Park	An area of ridge and furrow from the medieval period identified in woodland in Coombe Abbey Landscape Park to the south of the southern arm of Coombe Pool.	439094	278827	Medieval	Low

Reference Number	Designation	Name	Description	Easting	Northing	Period	Value/ Sensitivity
MWA3720	Non-designated heritage asset (Warwickshire HER)	High Bridge, Walsgrave on Sowe	High Bridge, the site of a modern bridge. A map of 1823 suggests that this might be the site of an earlier bridge. The site is located 700m west of Walsgrave Hill.	438727	280703	Medieval to Modern	Low
MWA2848	Non-designated heritage asset (Warwickshire HER)	Site of Clay pit, 150m northwest of Little Rough, Binley Woods	The site of a 19th century clay pit in Binley Woods. The pit is probably associated with other extractions pits, a kiln site and a brickworks of a similar date, located to the west and within Coventry.	438865	278093	Post-medieval	Low
MWA3732	Non-designated heritage asset (Warwickshire HER)	Site of Brickworks 400m S of The Woodlands	The site of brick and tile works dating to the Imperial period which were indicated on an estate map of 1823. No surface evidence remains. The site is south of the southwest end of Combe Country Park	438968	278643	Post-medieval	Low
MWA3733	Non-designated heritage asset (Warwickshire HER)	Quarry within Combe Abbey Deer Park	The site of a gravel pit from which gravel was extracted during the Post Medieval period. It is marked on an estate map of 1823. The gravel pit was situated inside Combe Abbey Deer Park.	438816	279099	Post-medieval	Low
MWA3736	Non-designated heritage asset (Warwickshire HER)	Quarry, Little Wrautam, W of Combe Abbey	The site of a gravel pit, from which gravel was extracted during the Imperial period. It was situated at Little Wrautam.	439911	280155	Post-medieval	Low

Reference Number	Designation	Name	Description	Easting	Northing	Period	Value/ Sensitivity
MWA3737	Non-designated heritage asset (Warwickshire HER)	Possible Quarry, 'Marlpit Close', Walsgrave on Sowe	The possible site of a marl pit dating to at least the Imperial period is suggested by documentary evidence. Evidence of ridge and furrow cultivation also exists in this area and survives as earthworks. These features are situated 500m north of Walsgrave	439458	281079	Post-medieval	Low
MWA4788/ MCT15261	Non-designated heritage asset (Warwickshire HER)	Turnpike road from Market Harborough to Coventry	A toll road that was in use during the Imperial period. Travellers had to pay a toll to use the road. It ran from Coventry to Market Harborough.	438588	278719	Post-medieval	Medium
MWA6724	Non-designated heritage asset (Warwickshire HER)	Site of Gravel Pit SW of Walsgrave Hill	The site of a gravel pit from which gravel was extracted during the Imperial period. The site is marked on the Ordnance Survey map of 1886. It was situated 500m south west of Walsgrave Hill.	439011	280167	Post-medieval	Low
MWA6725	Non-designated heritage asset (Warwickshire HER)	Site of Gasworks at Little Wrautam (Coombe Abbey).	The site of a gasworks, where gas was produced during the Imperial period for domestic use. The gasworks is marked on the Ordnance Survey map of 1886. It was situated at Little Wrautam. From about 1900 the gas works was replaced by an electric power	439952	280437	Post-medieval	Low
MWA6853	Non-designated heritage asset (Warwickshire HER)	Site of Fish Pond NE of Oak Farm	The site of a fishpond, used for the breeding and storage of fish. It is marked on the Ordnance Survey map of 1886. It dates to the Imperial period, and is situated north of Lyttleton Close, Binley Woods.	438459	278500	Post-medieval	Low

Reference Number	Designation	Name	Description	Easting	Northing	Period	Value/ Sensitivity
MWA6929	Non-designated heritage asset (Warwickshire HER)	Site of Gravel Pit NW of The Woodlands	The site of a gravel pit from which gravel was extracted during the Imperial period. It was marked on the Ordnance Survey map of 1886, and was situated 100m northeast of the Boat House of Coombe Country Park Pool.	438793	279148	Post-medieval	Low
MWA6930	Non-designated heritage asset (Warwickshire HER)	Site of Clay Pits at Combe Fields Deer Park	The site of several clay pits from which clay was extracted for brick making during the Imperial period. The clay pits were situated within Combe Abbey deer park.	439652	279239	Post-medieval	Low
MWA6986	Non-designated heritage asset (Warwickshire HER)	Findspot - Post Medieval coin	Findspot - a Post Medieval coin was found 500m north east of Binley.	438401	278498	Post-medieval	Negligible
MWA8193	Non-designated heritage asset (Warwickshire HER)	The Menagerie within Combe Abbey Deer Park	The site of a menagerie or zoo associated with the Combe Abbey estate. It dated to the Imperial period and was situated within Combe Abbey Deer Park.	438849	279022	Post-medieval	High
MWA8765	Non-designated heritage asset (Warwickshire HER)	Big Rough	Big Rough wood is possibly a Medieval managed woodland; former grazed common wood. The woodland comprises; semi-natural and possibly ancient coppiced tree communities.	439206	277765	Post-medieval	Low

Reference Number	Designation	Name	Description	Easting	Northing	Period	Value/ Sensitivity
MWA9584	Non-designated heritage asset (Warwickshire HER)	Ansty Airfield	Ansty Airfield ; its extent and history based on an aerial photographs and on documentary evidence.	440042	281071	Modern	Low
MWA12948	Non-designated heritage asset (Warwickshire HER)	Coventry Rocket Development Test Site	Site of the Coventry Rocket Development Test facilities west of Ansty Airfield (now Ansty Business Park). Cold War site active between 1945-1971. The site appears to have largely focused on the testing of Rocket Motors.	439932	281369	Modern	Low
MWA20535	Non-designated heritage asset (Warwickshire HER)	Crash site of G-BOLZ south of Coombe Abbey	On the 17th August 2008 there was a crash between a Cessna 402C, G-EYES and Rand KR-2, G-BOLZ near Coventry Airport.	439637	279142	Modern	Low
MWA31267	Non-designated heritage asset (Warwickshire HER)	Walsgrave Hill Trig Point, Combe Fields	Trig point pillar	439266	280630	Unknown	Low
RF1	Non-designated heritage asset (Warwickshire HER)	Ridge and Furrow	Ridge and furrow recorded by Warwickshire HER	438266	278521	Unknown	Low
RF2	Non-designated	Ridge and Furrow	Ridge and furrow recorded by Warwickshire HER	438333	280176	Unknown	Low

Reference Number	Designation	Name	Description	Easting	Northing	Period	Value/ Sensitivity
	heritage asset (Warwickshire HER)						
RF3	Non-designated heritage asset (Warwickshire HER)	Ridge and Furrow	Ridge and furrow recorded by Warwickshire HER	438618	280448	Unknown	Low
RF4	Non-designated heritage asset (Warwickshire HER)	Ridge and Furrow	Ridge and furrow recorded by Warwickshire HER	438465	280559	Unknown	Low
RF5	Non-designated heritage asset (Warwickshire HER)	Ridge and Furrow	Ridge and furrow recorded by Warwickshire HER	438688	280784	Unknown	Low
RF6	Non-designated heritage asset (Warwickshire HER)	Ridge and Furrow	Ridge and furrow recorded by Warwickshire HER	438966	280797	Unknown	Low
RF7	Non-designated heritage asset	Ridge and Furrow	Ridge and furrow recorded by Warwickshire HER	438760	280388	Unknown	Low

Reference Number	Designation	Name	Description	Easting	Northing	Period	Value/ Sensitivity
	(Warwickshire HER)						
RF8	Non-designated heritage asset (Warwickshire HER)	Ridge and Furrow	Ridge and furrow recorded by Warwickshire HER	439240	280879	Unknown	Low
RF9	Non-designated heritage asset (Warwickshire HER)	Ridge and Furrow	Ridge and furrow recorded by Warwickshire HER	439174	280350	Unknown	Low
RF10	Non-designated heritage asset (Warwickshire HER)	Ridge and Furrow	Ridge and furrow recorded by Warwickshire HER	437821	280331	Unknown	Low
DCT891/ MCT160	Archaeological Constraints Area (Coventry HER)	Binley Mill, Church & related	The site of Binley Mill, a watermill that was in operation in the medieval period and finally went out of use in the early 1900s. Includes area of MCT160 and MCT189.	437686	278525	Medieval	Medium
DCT892	Archaeological Constraints Area (Coventry HER)	Walsgrave Village, Moats & Mill	Walsgrave Village	437833	280585	Medieval	Medium

Reference Number	Designation	Name	Description	Easting	Northing	Period	Value/ Sensitivity
DCT942/ MCT189	Archaeological Constraints Area (Coventry HER)	Binley Windmill	Windmill of potential medieval date	437708	279004	Medieval	Medium
DCT1182/ MCT2235	Archaeological Constraints Area (Coventry HER)	Earthworks North of St. Bartholomew's Church, Binley	An area of earthworks, possibly deserted medieval village, observed during a visit to St. Bartholomew's Church by Conservation and Archaeology Team staff in 2005.	437773	278594	Medieval	Medium
DCT1176	Archaeological Constraints Area (Coventry HER)	Area of ridge and furrow north Clifford Bridge Road allotments	An area of ridge and furrow north Clifford Bridge Road allotments, visible on 1980 aerial photograph.	437780	279421	Post- Medieval	Medium
DCT893	Archaeological Constraints Area (Coventry HER)	Walsgrave Church & Hall	Church and hall	437939	280701	Post- Medieval	Medium
DCT1359/ MCT15370	Archaeological Constraints Area (Coventry HER)	Site of Post Medieval Brickworks, Skipworth Road	Site of a brickworks, with a kiln, clay pit and other earthworks, that is marked on the 1888 Ordnance Survey map but which may be of an earlier date. The site of a brickworks, kiln and several clay pits depicted on the 1888 OS map as disused. The 1778 Craven Estate Map of Binley records this area as an enclosure called Homeward Claylands Field (see MCT7258), suggesting that clay	438444	278050	Post- Medieval	Medium

Reference Number	Designation	Name	Description	Easting	Northing	Period	Value/ Sensitivity
			extraction was taking place here from at least the late 18th century. This record contains multiple shapefiles.				
DCT774/ MCT287	Locally Listed Building (Coventry HER)	Rosedale	Rosedale, now two dwellings but formerly one. It was built at some point between 1778 and 1888 and is a locally listed building.	437832	278686	Post-Medieval	Medium
DCT778/ MCT393	Locally Listed Building (Coventry HER)	28 and 30 School House Lane	A former school house that is recorded on the 1844 Sowe Tithe Map and is probably early 19th century in date. The building is locally listed.	438091	280796	Post-Medieval	Medium
DCT779/ MCT15402	Locally Listed Building (Coventry HER)	Old Grammar School	Grammar School buildings dating from 1879, although some may have been used earlier as agricultural buildings. This is a grouping of 19th century brick and tile buildings, some of which were originally in agricultural use. Grammar School buildings which are locally listed dating from 1879, although some may have been used earlier as agricultural buildings. This is a grouping of 19th century brick and tile buildings, some of which were originally in agricultural use. It comprises the two-storey former school building, which has a porch carrying an 1879 datestone; another two storey building of plainer character which is joined to it at right angles; a single storey bungalow with hipped roof which betrays signs of its former use as a shelter shed or wagon hovel with an open front; and a single storey building adjacent to the school which would also have been in agricultural use. This record has multiple shapefiles.	438027	278643	Post-Medieval	Medium
DCT810/ MCT333/ MCT15953	Locally Listed Building	Cook's Cottages	This area was within a large newly enclosed field shortly after 1756. The building had been built by 1888 and is marked on the map as Cook's Barn.	438370	281600	Post-Medieval	Medium

Reference Number	Designation	Name	Description	Easting	Northing	Period	Value/ Sensitivity
	(Coventry HER)						
DCT1152/ MCT2248/ MCT2264	Archaeological Constraints Area (Coventry HER)	Second World War Military Site, Binley	WW2 military site as seen on RAF AP March 1946, SP3777NE	437870	277986	Modern	Medium
DCT963	Archaeological Constraints Area (Coventry HER)	Alpha Cottage, Walsgrave	Alpha Cottage	437797	280327	Unknown	Medium
MCT15965	Non-designated heritage landscape asset (Coventry HER)	Medieval ridge and furrow off Harry Weston Road, Binley	An area of ridge and furrow was found during stripping and recording fieldwork on land off Harry Weston Road. It may date to the medieval period as it appears to respect two ditches of this period that were also excavated (see MCT15980).	437827	278473	Early Medieval	Low
MCT15980	Non-designated heritage landscape asset (Coventry HER)	Medieval ditches off Harry Weston Road	Several ditches were excavated during a strip and record exercise on land off Harry Weston Road, Binley. The ditches contained pottery dating from the 12th to the 16th centuries and two of them showed evidence of having been re-cut.	437869	278484	Early Medieval	Low
MCT63	Non-designated heritage landscape	Ridge and furrow S of River Sowe, Walsgrave	Ridge and furrow south of River Sowe, Walsgrave. The earthworks are oriented southwest to northeast. Recorded off aerial photography.	437814	280325	Medieval	Low

Reference Number	Designation	Name	Description	Easting	Northing	Period	Value/ Sensitivity
	asset (Coventry HER)						
MCT65	Non-designated heritage landscape asset (Coventry HER)	Ridge and Furrow ; Playing Field; S Of Caludon	Cropmark of Ridge and Furrow (roughly N-S) N of allotments. Visible on 2005 aerial photographs.	437813	279631	Medieval	Low
MCT153	Non-designated heritage landscape asset (Coventry HER)	Possible Site of Caludon Deserted Medieval Settlement	Deserted Village. Caludon in Wyken (?374802). 'Chapel now ruinous' says. Dugdale. Last incumbent 1359. Caludon House on 1"OS map. Caludon House. No traces of deserted village found in its vicinity. Area now covered by extensive development. Plan of earthworks. Other OE names are Caludon... leet jurisdiction of manor of Cheylesmore 1355 extended over Caludon... Caludon part of detached parish of St Michael, Coventry.	437400	280200	Medieval	Medium
MCT304	Non-designated heritage landscape asset (Coventry HER)	Ridge and Furrow; Coventry Eastern Bypass Site 4	Part of large, well preserved area of ridge and furrow c300m W of Walsgrave Hill surveyed by plane-table, with photographic and sketch records of remainder. In excess of 90% since been destroyed by road corridor and removal of hill for construction use. Close dating not possible though several phases of activity were represented. Of particular interest were clear signs of at least 2 main phases where furlongs intersected and a possible third phase where low, flat topped ridges were noted between many of higher ones.	439200	280700	Medieval	Low
MCT581	Non-designated heritage landscape asset	Area of Ridge And Furrow, Walsgrave On Sowe	An area of ridge and furrow cultivation that was visible on a 1977 aerial photograph was evaluated in 2002 but no dating evidence was found. This records contains multiple shapefiles.	438427	280531	Medieval	Low

Reference Number	Designation	Name	Description	Easting	Northing	Period	Value/ Sensitivity
	(Coventry HER)						
MCT586	Non-designated heritage landscape asset (Coventry HER)	Ridge & Furrow; Binley Road; Stoke	An area of ridge and furrow is visible as an earthwork on aerial photographs of 1946, 1977, 2007 and 2013.	437566	278487	Medieval	Low
MCT588	Non-designated heritage landscape asset (Coventry HER)	Ridge And Furrow; S of Brinklow Road; Binley	An area of ridge and furrow visible as earthworks on a 1977 aerial photograph. Now ploughed out.	438030	278430	Medieval	Low
MCT635	Non-designated heritage landscape asset (Coventry HER)	Clifford DMV; S Of Walsgrave On Sowe	The deserted medieval settlement of Clifford may be located in this area. There are 2 possible moats in vicinity (6243 & 6285) as well as Manor House to N.	437900	280600	Medieval	Medium
MCT740	Non-designated heritage landscape asset (Coventry HER)	Ridge & Furrow; NW of River Sowe; E of Stoke	An area of ridge and furrow earthworks is visible on a 1946 aerial photograph. The earthworks are not visible on the 2005 aerial photographs. Much of the area, however, especially on the eastern side, is covered with trees/scrub vegetation, that might be obscuring any surviving earthworks.	437435	278799	Medieval	Low
MCT1064	Non-designated	Medieval Park; Caludon	The site of the medieval deer park of Caludon Castle. The exact extent of the deer park is not known. In 1279 park of	437400	280100	Medieval	Low

Reference Number	Designation	Name	Description	Easting	Northing	Period	Value/ Sensitivity
	heritage landscape asset (Coventry HER)		20 acres and pool... In the late 14th century the keeper caused damage to oaks in park by felling.... by 1778 a plot of 6 acres "part of park" at Junction of Wyken Croft and Sowe Rd.... High Park and Barley Park were in Lapworth's farms. These pieces are probably remains of the medieval park.				
MCT1066	Non-designated heritage landscape asset (Coventry HER)	Moat/Fishponds: NE of Caludon Castle Moat	The site of possible medieval fishponds associated with Caludon Castle. The ponds were depicted on the First Edition Ordnance Survey map of 1888 as earthworks. First edition Ordnance Survey map shows further earthworks/marshy area to NE of castle moat. Either another small square moat with fishpond parallel to N side or series of fishponds.	437438	280248	Medieval	Low
MCT1076	Non-designated heritage landscape asset (Coventry HER)	The Laurels (Site): Walsgrave On Sowe	Evidence for the location of manor houses not clear. 3 possible sites for 2 reputed manors. MH of Peyto estate& Willoughby estate stood in 1635 & 1797 immediately S of church& vicarage. In 1843 building immed S of vicars close owned by Lord Willoughby, divided into 3 cottages known in recent years as The Laurels. The Laurels demolished c1950, site used for bungalows. Not recorded any part of structure was ancient (stood betw church& Wals Hall on ancient site).	437950	280660	Medieval	Low
MCT16481	Non-designated heritage landscape asset (Coventry HER)	Ridge and Furrow	The course of the pipeline [in area E] cut-well defined ridge and furrow earthworks in a field (Field 1507) under pasture to the south of a stream north-west of Walsgrave Hill Farm. This ridge and furrow orientated northwest-southeast terminated at a bank [headland] orientated northeast-southwest. A later field boundary bank aligned northwest-southeast incorporated a mature tree and cut across the ridge and furrow. Traces of similarly aligned ridge and furrow were also noted in adjacent fields to the east and south (Fields 1057a, 2680 and 1648). ... [Area F] In a field (Field 0778) under pasture, immediately to the	439305	280884	Medieval	Low

Reference Number	Designation	Name	Description	Easting	Northing	Period	Value/ Sensitivity
			south of field 1507, north of Faber Road the route cut ridge and furrow orientated north-west, south-east. Traces of similarly aligned ridge and furrow were also noted in a field to the south of faber Road (Field 1648). This record contains multiple shapefiles.				
MCT16482	Non-designated heritage landscape asset (Coventry HER)	Ridge and Furrow	Ridge and furrow recorded during an watching brief in 1993/4. It is visible as an earthwork on 2005 aerial photographs. This record contains multiple shapefiles.	438843	280789	Medieval	Low
MCT16624	Non-designated heritage landscape asset (Coventry HER)	Medieval pit and gully found on land off Harry Western Road	Medieval pit and gully were revealed in an archaeological evaluation exercise on land off Harry Weston Road in April 2007. The features were found in Trench 1 and correspond to the position of a building depicted on the Craven Estate Map of 1746. The pit was filled with a grey sand and contained a single sherd of 13th century pottery. The gully cut across the trench on a north-south alignment and its fill contained a single sherd of pottery dating to the 12th to 14th century.	437812	278466	Medieval	Low
MCT16625	Non-designated heritage landscape asset (Coventry HER)	Medieval hearth revealed on land off Harry Weston Road	A hearth was found during an archaeological evaluation on land off Harry Weston Road in April 2007, in the north east end of trench 4. An irregular shaped pit was revealed with its base lined with reddish brown clay and partially enclosed by heat damaged stones. A single sherd of Coventry A ware pottery was found within the burned deposit and a sample was taken producing a large quantity of charred cereal grains.	437876	278492	Medieval	Low
MCT147	Non-designated heritage landscape	Field Boundary Stone	A field boundary stone inscribed with the date 1663. The stone has probably been moved from its original position.	437470	278720	Post-medieval	Low

Reference Number	Designation	Name	Description	Easting	Northing	Period	Value/ Sensitivity
	asset (Coventry HER)						
MCT7686	Non-designated heritage landscape asset (Coventry HER)	Abuttal	Land ownership: Bakers Charity. Abuttment	437527	278605	Post-medieval	Low
MCT7687	Non-designated heritage landscape asset (Coventry HER)	Abuttal	Land ownership: Mandril. Abuttment	437534	278722	Post-medieval	Low
MCT15632	Non-designated heritage landscape asset (Coventry HER)	Colliers Bridge	Colliers Bridge at Binley on the 1746 Craven estate map. This record contains multiple shapefiles.	438953	278122	Post-medieval	Low
MCT15687	Non-designated heritage landscape asset (Coventry HER)	Bridge	Bridge at Binley on the 1746 Craven estate map. This record contains multiple shapefiles.	438823	278797	Post-medieval	Low

Reference Number	Designation	Name	Description	Easting	Northing	Period	Value/ Sensitivity
MCT15827	Non-designated heritage landscape asset (Coventry HER)	Sow Bridge	Sow Bridge at Binley on the 1746 Craven estate map. This record contains multiple shapefiles.	437907	279481	Post-medieval	Low
MCT15828	Non-designated heritage landscape asset (Coventry HER)	Bridge	Bridge at Binley on the 1746 Craven estate map. This record contains multiple shapefiles.	437910	279429	Post-medieval	Low
MCT16853	Non-designated heritage landscape asset (Coventry HER)	Hedge	A hedgerow that probably dates back to at least 1668. The boundary of an enclosure along the same alignment as the hedge is mentioned in an estate survey of this date. Much of it is also on the alignment of the historic parish boundary between Wyken and Stoke parishes. The hedge is situated to the west and north of Lloyds Crescent.	437232	279050	Post-medieval	Low
MCT60	Non-designated heritage landscape asset (Coventry HER)	An Elizabethan coin (1588-1603) found in the Binley area	6d of Elizabeth (1588-1603)	438400	278500	Post-Medieval	Negligible
MCT539	Non-designated heritage landscape	Site of pound on Brinklow Road	The site of a pound on the southern side of Brinklow Road. It is depicted on the 1st Edition Ordnance Survey map of 1888.	438066	278598	Post-medieval	Low

Reference Number	Designation	Name	Description	Easting	Northing	Period	Value/ Sensitivity
	asset (Coventry HER)						
MCT794	Non-designated heritage landscape asset (Coventry HER)	Walsgrave Hall (Site); Hall Lane; Walsgrave on Sowe	Walsgrave Hall is known to have existed in the 16th century when it was described as 'a residence of 10 or 12 chambers'. In 1823 William Wale rebuilt Walsgrave Hall, although he may have retained the rear wing from the earlier hall. The stables and coach house range were also earlier, containing a date stone from 1690. This later hall may have occupied the same site of the medieval manor house belonging to St. Mary's Priory, although this may also be the site of the moated manor house to the south. Both sites have now been built over, Walsgrave Hall having been demolished in the early 1960s.	437932	280713	Post-medieval	Low
MCT891	Non-designated heritage landscape asset (Coventry HER)	R & F; Coventry Eastern Bypass Site 3	A small area of ridge and furrow was recorded during a field investigation in this area. Post-1800 finds of coins and a belt buckle were also found.	438300	279300	Post-medieval	Negligible
MCT1065	Non-designated heritage landscape asset (Coventry HER)	Caludon House	Caludon House, a farmhouse built on the site of Caludon Castle. Stone from the castle may have been used to build the farmhouse. It was demolished some time after 1964. The former farmhouse which occupies part of the moated house to SE of the castle ruins said to have been built by Clifford c1800 using material from castle. However already in existence by 1788 when known as Caludon House, older part of building brick on stone plinth. 1964: in poor repair and awaiting demolition. House in SE corner of castle moat which appears to be filled in and buildings around 3 sides of courtyard to E of this [see MCT15927]. The house is marked on a sale plan dating to 1815. The	437389	280139	Post-medieval	Low

Reference Number	Designation	Name	Description	Easting	Northing	Period	Value/ Sensitivity
			sale catalogue records a 'Farm house, yard, garden and moat, 1a. 2r. 21p. Held by William Goddard'. This land is recorded as non-titheable in the 1849 St. Michael's Tithe Map and Apportionment.				
MCT15255	Non-designated heritage landscape asset (Coventry HER)	Field	Field on the 1888 OS map; no Tithe Map available	437697	278740	Post-medieval	Low
MCT15263	Non-designated heritage landscape asset (Coventry HER)	Road	Road on the 1888 OS map; no Tithe Map available	437771	278661	Post-medieval	Medium
MCT15351	Non-designated heritage landscape asset (Coventry HER)	Road	Road on the 1888 OS map; no Tithe Map available	437483	276981	Post-medieval	Medium
MCT15363	Non-designated heritage landscape asset (Coventry HER)	Farmstead	Farmstead on the 1888 OS map; no Tithe Map available	438706	277628	Post-medieval	Low

Reference Number	Designation	Name	Description	Easting	Northing	Period	Value/ Sensitivity
MCT15374	Non-designated heritage landscape asset (Coventry HER)	Road	Road on the 1888 OS map; no Tithe Map available	438674	277690	Post-medieval	Medium
MCT15380	Non-designated heritage landscape asset (Coventry HER)	Homestead	Homestead on the 1888 OS map; no Tithe Map available	437955	278197	Post-medieval	Low
MCT15381	Non-designated heritage landscape asset (Coventry HER)	Homestead	Homestead on the 1888 OS map; no Tithe Map available	437988	278174	Post-medieval	Low
MCT15383	Non-designated heritage landscape asset (Coventry HER)	Homestead	Smithy and homestead on the 1888 OS map; no Tithe Map available	437788	278386	Post-medieval	Low
MCT15384	Non-designated heritage landscape	Craven Arms Public House	Craven Arms Public House on the 1888 OS map; no Tithe Map available	437799	278433	Post-medieval	Low

Reference Number	Designation	Name	Description	Easting	Northing	Period	Value/ Sensitivity
	asset (Coventry HER)						
MCT15385	Non-designated heritage landscape asset (Coventry HER)	Public House	Public House on the 1888 OS map; no Tithe Map available	437749	278374	Post-medieval	Low
MCT15388	Non-designated heritage landscape asset (Coventry HER)	Vicarage	Parsonage on the 1888 OS map; no Tithe Map available	437723	278556	Post-medieval	Low
MCT15389	Non-designated heritage landscape asset (Coventry HER)	River Sowe	River Sowe on the 1888 OS map; no Tithe Map available	436942	277995	Post-medieval	Low
MCT15390	Non-designated heritage landscape asset (Coventry HER)	River Sowe	River Sowe, mill related section on the 1888 OS map; no Tithe Map available	437638	278785	Post-medieval	Low

Reference Number	Designation	Name	Description	Easting	Northing	Period	Value/ Sensitivity
MCT15391	Non-designated heritage landscape asset (Coventry HER)	River Sowe	River Sowe on the 1888 OS map; no Tithe Map available	437673	278834	Post-medieval	Low
MCT15392	Non-designated heritage landscape asset (Coventry HER)	Watermill	Binley Corn Mill on the 1888 OS map; no Tithe Map available	437678	278690	Post-medieval	Low
MCT15393	Non-designated heritage landscape asset (Coventry HER)	Outbuilding	Outbuilding on the 1888 OS map; no Tithe Map available	437719	278637	Post-medieval	Low
MCT15394	Non-designated heritage landscape asset (Coventry HER)	Field and outbuilding	Field and outbuilding on the 1888 OS map; no Tithe Map available	437725	278665	Post-medieval	Low
MCT15395	Non-designated heritage landscape	Field and outbuilding	House and garden on the 1888 OS map; no Tithe Map available	437824	278672	Post-medieval	Low

Reference Number	Designation	Name	Description	Easting	Northing	Period	Value/ Sensitivity
	asset (Coventry HER)						
MCT15396	Non-designated heritage landscape asset (Coventry HER)	Homestead	Homestead on the 1888 OS map; no Tithe Map available	437776	278688	Post-medieval	Low
MCT15397	Non-designated heritage landscape asset (Coventry HER)	School	School on the 1888 OS map; no Tithe Map available	437885	278615	Post-medieval	Low
MCT15398	Non-designated heritage landscape asset (Coventry HER)	School	Homestead? on the 1888 OS map; no Tithe Map available	437960	278570	Post-medieval	Low
MCT15399	Non-designated heritage landscape asset (Coventry HER)	Homestead?	Homestead on the 1888 OS map; no Tithe Map available. This record has multiple shapefiles.	438018	278564	Post-medieval	Low

Reference Number	Designation	Name	Description	Easting	Northing	Period	Value/ Sensitivity
MCT15403	Non-designated heritage landscape asset (Coventry HER)	Field and Outbuilding	Field and outbuilding on the 1888 map; No Tithe Map available. This record has multiple shapefiles.	438345	278433	Post-medieval	Low
MCT15408	Non-designated heritage landscape asset (Coventry HER)	Oak Farm	Oak Farm as on the 1888 map; No Tithe Map available. This record has multiple shapefiles.	438276	278412	Post-medieval	Low
MCT15409	Non-designated heritage landscape asset (Coventry HER)	Field	Field on the 1888 map; No Tithe Map available	438323	278417	Post-medieval	Low
MCT15424	Non-designated heritage landscape asset (Coventry HER)	Farmstead	Farmstead on the 1888 map; no Tithe map available	437787	278279	Post-medieval	Low
MCT15911	Non-designated heritage landscape	Road	Road at Walsgrave on the 1887 OS map; no Tithe map available	438452	281752	Post-medieval	Medium

Reference Number	Designation	Name	Description	Easting	Northing	Period	Value/ Sensitivity
	asset (Coventry HER)						
MCT15927	Non-designated heritage landscape asset (Coventry HER)	Farm yard and associated buildings, Caludon	A farm yard containing a barn, stable and other outbuildings is recorded in a sale catalogue of 1815 as part of the Caludon Estate. Farm yard, barn, stables and outbuildings, 0a. 2r. 5p. Held by William Goddard. This land is recorded on the 1849 St. Michael's Tithe Map and Apportionment as non-titheable land.	437476	280143	Post-medieval	Low
MCT15928	Non-designated heritage landscape asset (Coventry HER)	Orchard	The site of an orchard that was recorded in an 1815 sale catalogue as part of the Caludon Estate. Orchard, 02a. 2r. 21p. Held by William Goddard. This land is recorded in the 1849 St. Michael's Tithe Apportionment and Map as non-titheable land.	437306	280114	Post-medieval	Low
MCT15929	Non-designated heritage landscape asset (Coventry HER)	Farm	Farm at Walsgrave on the 1887 OS map; no Tithe map available	438607	281772	Post-medieval	Low
MCT15947	Non-designated heritage landscape asset (Coventry HER)	Homestead	Homestead at Walsgrave on the 1887 OS map; no Tithe map available	438316	281428	Post-medieval	Low

Reference Number	Designation	Name	Description	Easting	Northing	Period	Value/ Sensitivity
MCT15948	Non-designated heritage landscape asset (Coventry HER)	Homestead	Homestead at Walsgrave on the 1887 OS map; no Tithe map available	438381	281429	Post-medieval	Low
MCT15949	Non-designated heritage landscape asset (Coventry HER)	Homestead	Homestead at Walsgrave on the 1887 OS map; no Tithe map available	438365	281422	Post-medieval	Low
MCT15950	Non-designated heritage landscape asset (Coventry HER)	Field	Field at Walsgrave on the 1887 OS map; no Tithe map available	438346	281418	Post-medieval	Low
MCT15951	Non-designated heritage landscape asset (Coventry HER)	Homestead	Homestead at Walsgrave on the 1887 OS map; no Tithe map available	438290	281443	Post-medieval	Low
MCT15952	Non-designated heritage landscape	Road	Road at Walsgrave on the 1887 OS map; no Tithe map available. No longer extant.	438315	281463	Post-medieval	Negligible

Reference Number	Designation	Name	Description	Easting	Northing	Period	Value/ Sensitivity
	asset (Coventry HER)						
MCT15955	Non-designated heritage landscape asset (Coventry HER)	Stream	Stream at Walsgrave on the 1887 OS map; no Tithe map available. This record has multiple shapefiles.	438605	281269	Post-medieval	Low
MCT15956	Non-designated heritage landscape asset (Coventry HER)	Pingle	Pingle at Walsgrave on the 1887 OS map; no Tithe map available	438633	280714	Post-medieval	Low
MCT15964	Non-designated heritage landscape asset (Coventry HER)	Field	?Plantation and field at Walsgrave on the 1887 OS map; no Tithe map available	438019	280644	Post-medieval	Low
MCT15973	Non-designated heritage landscape asset (Coventry HER)	Sheepwash	Sheepwash at Walsgrave on the 1887 OS map; no Tithe map available. This record has multiple shapefiles.	438713	280655	Post-medieval	Low

Reference Number	Designation	Name	Description	Easting	Northing	Period	Value/ Sensitivity
MCT15982	Non-designated heritage landscape asset (Coventry HER)	Old Quarry?	Old Quarry at Walsgrave on the 1887 OS map; no Tithe map available	438966	280907	Post-medieval	Low
MCT16036	Non-designated heritage landscape asset (Coventry HER)	Field	Field at Walsgrave on the 1887 OS map; no Tithe map available	438191	281088	Post-medieval	Low
MCT16039	Non-designated heritage landscape asset (Coventry HER)	Road	Road at Walsgrave on the 1887 OS map; no Tithe map available	438550	280750	Post-medieval	Medium
MCT16040	Non-designated heritage landscape asset (Coventry HER)	Road	Road at Walsgrave on the 1887 OS map; no Tithe map available	438039	280796	Post-medieval	Medium
MCT16041	Non-designated heritage landscape	Road	Road at Walsgrave on the 1887 OS map; no Tithe map available	437966	280806	Post-medieval	Medium

Reference Number	Designation	Name	Description	Easting	Northing	Period	Value/ Sensitivity
	asset (Coventry HER)						
MCT16042	Non-designated heritage landscape asset (Coventry HER)	Field	Field at Walsgrave on the 1887 OS map; no Tithe map available	438034	280647	Post-medieval	Low
MCT16043	Non-designated heritage landscape asset (Coventry HER)	Stream	Stream at Walsgrave on the 1887 OS map; no Tithe map available. This record has multiple shapefiles.	439160	280996	Post-medieval	Low
MCT16044	Non-designated heritage landscape asset (Coventry HER)	Wood	Wood at Walsgrave on the 1887 OS map; no Tithe map available	439603	281240	Post-medieval	Low
MCT16045	Non-designated heritage landscape asset (Coventry HER)	High Bridge	High Bridge at Walsgrave on the 1887 OS map; no Tithe map available	438725	280695	Post-medieval	Low

Reference Number	Designation	Name	Description	Easting	Northing	Period	Value/ Sensitivity
MCT16051	Non-designated heritage landscape asset (Coventry HER)	Homestead	Homestead at Walsgrave on the 1887 OS map; no Tithe map available	437940	280827	Post-medieval	Low
MCT16055	Non-designated heritage landscape asset (Coventry HER)	Stream	Stream at Walsgrave on the 1887 OS map; no Tithe map available	439166	281678	Post-medieval	Low
MCT16142	Non-designated heritage landscape asset (Coventry HER)	Pond	Pond at Walsgrave on the 1887 OS map; no Tithe map available.	438320	280490	Post-medieval	Low
MCT16143	Non-designated heritage landscape asset (Coventry HER)	Pond	Pond at Walsgrave on the 1887 OS map; no Tithe map available.	438205	280559	Post-medieval	Low
MCT16144	Non-designated heritage landscape	Pleck	Area between gardens and roads at Walsgrave on the 1887 OS map; no Tithe map available.	438008	280769	Post-medieval	Low

Reference Number	Designation	Name	Description	Easting	Northing	Period	Value/ Sensitivity
	asset (Coventry HER)						
MCT16200	Non-designated heritage landscape asset (Coventry HER)	Stream	Stream at Walsgrave on the 1887 OS map; no Tithe map available	439094	281236	Post-medieval	Low
MCT16201	Non-designated heritage landscape asset (Coventry HER)	Pond	Pond at Walsgrave on the 1887 OS map; no Tithe map available	438577	281166	Post-medieval	Low
MCT16474	Non-designated heritage landscape asset (Coventry HER)	Litle Court and Gardens at Caludon Castle	Litle court and gardens are mentioned in the 1668 survey of the Caludon Estate belonging to Thomas Preston.	437308	280105	Post-medieval	Low
MCT16962	Non-designated heritage landscape asset (Coventry HER)	Dove Sculpture, Richard Lee School	A memorial to Alderman Richard Lee in the form of a dove. It was created by Walter Ritchie in 1955. It now stands in the school car park, looking over a hedge, so that people can see it as they approach the school down the main driveway.	437000	279163	Modern	Low

Reference Number	Designation	Name	Description	Easting	Northing	Period	Value/ Sensitivity
MCT16483	Non-designated heritage landscape asset (Coventry HER)	Building	Area H: ... the foundations of a modern brick built structure were revealed, approx 400m north of the A428 in Field 8700.	438877	278160	Modern	Low
MCT15311	Non-designated heritage landscape asset (Coventry HER)	Richard Lee School, The Drive, Wyken	Richard Lee School, a light-steel framed, concrete clad building constructed in the early 1950s and opened in 1953. The continued use of a light-steel frame was considered to form part of the new emerging 'light and dry' philosophy as conceded by Stirrat Johnson-Marshall (a Herts architect who later became head of the Ministry of Education). Johnson- Marshall considered that as part of the school building programme, it should be 'self-denying' to the wider national interest, if necessary. This was due to the lack of materials at the time and that bricklayers and skilled workers should be needed for other vital reconstruction projects across the country. At this pointed to an easy to construct light steel structure with a cladding of light concrete. This light-steel structure technique was dubbed as the 'Meccano' system due to its relative ease to assemble. In addition, the light-steel system followed the structural pattern for the latest and most approved experiments in housing. The cladding, plain concrete was adopted for the stark reason that nothing else was then cheaply available. Richard Lee Primary School is designed on the Hills 8 feet by 3 inches 'grid' plan with the following stanchion heights used; 8 feet, 12 feet and 16 feet. All changes of floor and roof level are attained with these heights. The building is constructed from the light-steel structure with typical lattice girders. The external walls are of precast concrete spar-faced cladding blocks, with an inner skin of 3 inches precast fibrous plaster units.	437049	279117	Modern	Low

Reference Number	Designation	Name	Description	Easting	Northing	Period	Value/ Sensitivity
			The internal partitions of the building are of similar units/3 inches clinker concrete blocks. The roof consists of a 3-layer flet with half inch granite chippings. The windows are of galvanised steel in galvanised steel-metal sub-frames. The original internal materials were finished with semi-gloss oil paint, principally white, with bright colours on feature wall surfaces and on pin-ups. These have since been altered/re-painted. Floors were covered with thermoplastic tiles in grey and black throughout except for beech blocks in assembly halls, buff concrete tiles in lavatories and grey terrazzo on the stairs. Exposed beams and window sub-frames were painted light grey and fibrous plaster stanchion casings were white...				
MCT15981	Non-designated heritage landscape asset (Coventry HER)	Line of post holes of unknown date, Harry Weston Road, Binley	A line of post holes forming a wide arc was excavated on land off Harry Weston Road in 2007. At the centre west of the site, a lie of post holes extended west from ditch 642 and curved south forming a wide arc. The postholes varied between 0.3-0.5m in diameter and between 0.2 and 0.3 deep. All of the postholes were filled with grey/brown sand with little organic fill. Post hole 683 showed evidence of a post pipe 0.3m wide and with large pebbles up to 50mm that may be post packing. Although there were large pebbles up to 40-50mm in some of the postholes, there was no other firm evidence for post pads, pipes or packing. It is likely that the original posts were removed before the holes were allowed to silt naturally.	437833	278496	Unknown	Low
MCT16484	Non-designated heritage landscape asset (Coventry HER)	Deposit of Charcoal, Coventry Pipeline Phase 2	To the south [North?] of this structure [MCT16483] also in Field 8700, a large deposit of charcoal approx 10m long and 5m wide overlaying natural gravels was exposed by top-soil stripping approximately 520m south {north?} of the A428. No dating evidence was recovered from this deposit.	438814	278350	Unknown	Low

Reference Number	Designation	Name	Description	Easting	Northing	Period	Value/ Sensitivity
MCT16516	Non-designated heritage landscape asset (Coventry HER)	Undated charcoal spread, Walsgrave Hospital Area 1	A small concentration of charcoal was observed in the western half of the trench, this was excavated in half section, revealing a depth of just 0.02m, possibly representing a burnt out post base.	438460	280579	Unknown	Low
MCT16600	Non-designated heritage landscape asset (Coventry HER)	Linear features, possible building and pits at Caludon Castle School	Several possible linear and curvilinear features, a possible building and a number of pits were detected during a geophysical survey.	435494	279322	Unknown	Low
MCT16626	Non-designated heritage landscape asset (Coventry HER)	Pair of intersecting gullies and post hole of unknown date at land off Harry Weston Road	A pair of intersecting gullies and a post hole of unknown date were revealed during an archaeological evaluation exercise on land of Harry Weston Road in April 2007. The features were revealed in trench 5. No dating evidence was recovered from these features and the rest of the trench was blank.	437859	278451	Unknown	Low
MCT8297	Non-designated heritage landscape asset (Coventry HER)	Undated pit, Walsgrave Acute Hospital Site	An undated pit was found during an archaeological evaluation on this site.	438386	280729	Unknown	Low
HA001	Headland Identified Asset	Possible important hedgerow	Hedgerow, still surviving. Identified off 1887 OS Map. Likely of earlier date.	438911	280317	Post-medieval	Low

Reference Number	Designation	Name	Description	Easting	Northing	Period	Value/ Sensitivity
HA002	Headland Identified Asset	Possible important hedgerow	Hedgerow, still surviving. Identified off 1887 OS Map. Likely of earlier date.	438744	280165	Post-medieval	Low
HA003	Headland Identified Asset	Possible important hedgerow	Hedgerow, still surviving. Identified off 1887 OS Map. Likely of earlier date.	438634	279876	Post-medieval	Low
HA004	Headland Identified Asset	Possible important hedgerow	Hedgerow, still surviving. Identified off 1887 OS Map. Likely of earlier date.	438817	279919	Post-medieval	Low
HA005	Headland Identified Asset	Possible important hedgerow	Hedgerow, still surviving. Identified off 1887 OS Map. Likely of earlier date.	438362	279584	Post-medieval	Low
HA006	Headland Identified Asset	Former field system	Former field system, no longer surviving. Identified off 1887 OS Map.	438609	279744	Post-medieval	Negligible
HA007	Headland Identified Asset	Orchard	Orchard to south of Hungerley Hall Farmhouse, no longer surviving. Identified off 1887 OS Map.	438456	279443	Post-medieval	Negligible
HA008	Headland Identified Asset	Ponds	Two ponds situated beneath current A46, no longer surviving. Identified off 1887 OS Map.	438414	279347	Post-medieval	Negligible
HA009	Headland Identified Asset	Stream	Stream running east-west from Coombe Pool. Survival unknown, could exist as gully running under A46. Identified off 1887 OS Map.	438382	279213	Post-medieval	Low
HA010	Headland Identified Asset	Road	Road running east-west north of Hungerley Hall Farmhouse, no longer surviving. Identified off 1887 OS Map.	438988	280655	Post-medieval	Negligible

Reference Number	Designation	Name	Description	Easting	Northing	Period	Value/ Sensitivity
HA011	Headland Identified Asset	Gravel Pit	Gravel pit to west of Coombe Abbey Park, no longer surviving. Identified off 1887 OS Map.	438432	279041	Post-medieval	Negligible

2.6. Assessment of magnitude of impact

Table 5 Assessment of magnitude of impact

Reference Number	Designation	Name	Description of Potential Impact	Value/Sensitivity	Magnitude of Impact (before mitigation)
1014044/ MCT16469/ DCT890/ MCT16473	Scheduled Monument	Caludon Castle: a moated site and part of an associated water management system	No physical impact. Road diversions during construction have the potential to impact upon the setting of this monument. The slight increase in traffic along Clifford Bridge Road may impact the fragile setting of the moated site. This impact will be temporary.	High	Negligible
1014045/ MCT16471/ DCT890	Scheduled Monument	Moated site 190m south of Caludon Castle	No physical impact. Road diversions during construction have the potential to impact upon the setting of this monument. The slight increase in traffic along Clifford Bridge Road may impact the fragile setting of the moated site. This impact will be temporary.	High	Negligible
1000408/ MWA3740/ MWA7071	Grade II* Registered Park and Garden/ Conservation Area	Combe Abbey	No physical impact. The overlap between the Order Limits and the mapped extent of the RPG is considered to be a mapping anomaly. Increased noise and traffic during construction as a result of road diversions has the potential to impact upon the setting of this asset. The Scheme would temporarily alter the appreciation of the rural nature of the landscape surrounding the abbey as it is approached by visitors.	High	Negligible
1076645/ MCT16470	Grade I Listed Building	Remains of Caludon Castle	No physical impact. This listed building is within the ZTV, however as it is based off the DTM LiDAR model, the Scheme would only be visible from the tops of the surrounding trees or tops of walls.	High	No change

Reference Number	Designation	Name	Description of Potential Impact	Value/Sensitivity	Magnitude of Impact (before mitigation)
1034896/ MWA2847	Grade II Listed Building	Old Lodge Farmhouse	No physical impact. This listed building is within the ZTV, however as it is based off the DTM LiDAR model, the Scheme would only be visible from the rooftop of the building.	High	No change
1034897	Grade II Listed Building	Old Lodge Farm, Barn approximately 10 Metres South of Farmhouse	No physical impact. This listed building is within the ZTV, however as it is based off the DTM LiDAR model, the Scheme would only be visible from the rooftop of the building.	High	No change
1076629/ MCT672/ MCT15387	Grade I Listed Building	Church of St Bartholomew	No physical impact. This listed building is within the ZTV, however as it is based off the DTM LiDAR model, the Scheme would only be visible from the rooftop of the building.	High	No change
1076630/ MCT673	Grade II Listed Building	The Vicarage	No physical impact. This listed building is within the ZTV, however as it is based off the DTM LiDAR model, the Scheme would only be visible from the rooftop of the building.	High	No change
1076631/ MCT683	Grade II Listed Building	1 and 2, Brinklow Road	No physical impact. This listed building is within the ZTV, however as it is based off the DTM LiDAR model, the Scheme would only be visible from the rooftop of the building.	High	No change
1076632/ MCT694	Grade II Listed Building	6, Brinklow Road	No physical impact. This listed building is within the ZTV, however as it is based off the DTM LiDAR model, the Scheme would only be visible from the rooftop of the building.	High	No change
1076633/ MCT705	Grade II Listed Building	8, Brinklow Road	No physical impact. This listed building is within the ZTV, however as it is based off the DTM LiDAR model, the Scheme would only be visible from the rooftop of the building.	High	No change

Reference Number	Designation	Name	Description of Potential Impact	Value/Sensitivity	Magnitude of Impact (before mitigation)
1076634/ MCT716	Grade II Listed Building	10 And 12, Brinklow Road	No physical impact. This listed building is within the ZTV, however as it is based off the DTM LiDAR model, the Scheme would only be visible from the rooftop of the building.	High	No change
1087021/ MCT909	Grade II Listed Building	Stoke House	No physical impact. This listed building is within the ZTV, however as it is based off the DTM LiDAR model, the Scheme would only be visible from the rooftop of the building.	High	No change
1226789/ MCT79	Grade II Listed Building	Barn Approximately 50 Metres North Of Hungerley Hall Farmhouse	No physical impact. This listed building is within the ZTV and sits in close proximity to the Scheme. As a barn it draws the majority of its significance from its historic and architectural value. The surrounding farm buildings and surrounding open agricultural space form the setting of the barn.	High	Minor
1233531	Grade II Listed Building	Walsgrave Hill Farmhouse	No physical impact. This listed building is within the ZTV, however as it is based off the DTM LiDAR model, the Scheme would only be visible from the rooftop of the building.	High	No change
1233532/ MWA3726	Grade II* Listed Building	West Lodge	No physical impact. This listed building is within the ZTV, however as it is based off the DTM LiDAR model, the Scheme would only be visible from the rooftop of the building.	High	No change
1233533	Grade II* Listed Building	The Woodlands	No physical impact. This listed building is within the ZTV, however as it is based off the DTM LiDAR model, the Scheme would only be visible from the rooftop of the building.	High	No change
1233663/ MWA20536	Grade II Listed Building	Menagerie Farm buildings To North	No physical impact.	High	No change

Reference Number	Designation	Name	Description of Potential Impact	Value/Sensitivity	Magnitude of Impact (before mitigation)
		West Of The Woodlands	This listed building is within the ZTV, however as it is based off the DTM LiDAR model, the Scheme would only be visible from the rooftop of the building.		
1233703	Grade II Listed Building	Wall To South Of The Woodlands Combe Abbey	No physical impact. This listed building is within the ZTV, however as it is based off the DTM LiDAR model, the Scheme would only be visible from the top of the wall.	High	No change
1265638/ MCT80	Grade II Listed Building	Granary, Cowshed and Stable Range Approximately 15 Metres North West Of Hungerley Hall Farmhouse	No physical impact. These listed buildings is within the ZTV and sits in close proximity to the Scheme. As farm buildings they draw the majority of their significance from their historic and architectural value. The surrounding farm buildings and open agricultural land form the setting of these assets.	High	Minor
1265694/ MCT112	Grade II Listed Building	Hungerley Hall Farmhouse	The Scheme will physically impact the curtilage buildings included within this listing. The Scheme will demolish the yard wall and has the potential to cause damage to two barns and the farmhouse itself during construction as a result of vibration and subsidence. These listed buildings are within the ZTV and sit in close proximity to the Scheme. The curtilage listed assets draw the majority of their significance from their fabric, these assets are largely appreciated within the confines of their immediate setting. The farmhouse itself has a wider setting from which it draws significance. The surrounding rural landscape contributes to the significance of this building. The Scheme will further erode this setting and the increase noise, dust and traffic movement and use of machinery will impact upon the rural setting of this asset.	High	Minor

Reference Number	Designation	Name	Description of Potential Impact	Value/Sensitivity	Magnitude of Impact (before mitigation)
1276492	Grade II Listed Building	Boat House On South Side Of The Pool, Combe Abbey	None	High	No change
1276493	Grade II Listed Building	Wall To North Of The Woodlands, Combe Abbey And Attached Farmbuildings	No physical impact. This listed building is within the ZTV, however as it is based off the DTM LiDAR model, the Scheme would only be visible from the top of the wall.	High	No change
1335842/ MCT912	Grade II Listed Building	14, School House Lane	No physical impact. This listed building is within the ZTV, however as it is based off the DTM LiDAR model, the Scheme would only be visible from the rooftop of the building.	High	No change
1342892/ MCT854	Grade II Listed Building	White House	No physical impact. This listed building is within the ZTV, however as it is based off the DTM LiDAR model, the Scheme would only be visible from the rooftop of the building.	High	No change
1342904/ MCT669	Grade II Listed Building	22, Brandon Road	No physical impact. This listed building is within the ZTV, however as it is based off the DTM LiDAR model, the Scheme would only be visible from the rooftop of the building.	High	No change
1342922/ MCT671	Grade II Listed Building	34, Brandon Road	No physical impact. This listed building is within the ZTV, however as it is based off the DTM LiDAR model, the Scheme would only be visible from the rooftop of the building.	High	No change
1365086/ MWA2846/ MCT732	Grade II Listed Building	The Cocked Hat Restaurant And Hotel, Binley Common House	No physical impact. This listed building is within the ZTV, however as it is based off the DTM LiDAR model, the Scheme would only be visible from the rooftop of the building.	High	No change

Reference Number	Designation	Name	Description of Potential Impact	Value/Sensitivity	Magnitude of Impact (before mitigation)
MWA13379	Non-designated heritage asset (Warwickshire HER)	Cropmarks of a possible enclosure, ring ditch and linear features 500m north of Combe Abbey	None	Low	No change
MWA19114	Non-designated heritage asset (Warwickshire HER)	Possible Roman enclosure, Coombe Abbey	None	Medium	No change
MWA8764	Non-designated heritage asset (Warwickshire HER)	Binley Common Wood	None	Low	No change
MWA8277	Non-designated heritage asset (Warwickshire HER)	Ridge and furrow, Coventry Eastern Bypass Site 4	None	Low	No change
MWA10100	Non-designated heritage asset (Warwickshire HER)	Area of ridge and furrow in Coombe Abey Landscape Park	None	Low	No change
MWA3720	Non-designated heritage asset (Warwickshire HER)	High Bridge, Walsgrave on Sowe	None	Low	No change
MWA2848	Non-designated heritage asset (Warwickshire HER)	Site of Clay pit, 150m northwest of Little Rough, Binley Woods	None	Low	No change
MWA3732	Non-designated heritage asset (Warwickshire HER)	Site of Brickworks 400m S of The Woodlands	None	Low	No change
MWA3733	Non-designated heritage asset (Warwickshire HER)	Quarry within Combe Abbey Deer Park	None	Low	No change

Reference Number	Designation	Name	Description of Potential Impact	Value/Sensitivity	Magnitude of Impact (before mitigation)
MWA3736	Non-designated heritage asset (Warwickshire HER)	Quarry, Little Wrautam, W of Combe Abbey	None	Low	No change
MWA3737	Non-designated heritage asset (Warwickshire HER)	Possible Quarry, 'Marlpit Close', Walsgrave on Sowe	None	Low	No change
MWA4788/ MCT15261	Non-designated heritage asset (Warwickshire HER)	Turnpike road from Market Harborough to Coventry	None, it is assumed that the road is not preserved within the footprint of the scheme.	Medium	No change
MWA6724	Non-designated heritage asset (Warwickshire HER)	Site of Gravel Pit SW of Walsgrave Hill	None	Low	No change
MWA6725	Non-designated heritage asset (Warwickshire HER)	Site of Gasworks at Little Wrautam (Coombe Abbey).	None	Low	No change
MWA6853	Non-designated heritage asset (Warwickshire HER)	Site of Fish Pond NE of Oak Farm	None	Low	No change
MWA6929	Non-designated heritage asset (Warwickshire HER)	Site of Gravel Pit NW of The Woodlands	None	Low	No change
MWA6930	Non-designated heritage asset (Warwickshire HER)	Site of Clay Pits at Combe Fields Deer Park	None	Low	No change
MWA6986	Non-designated heritage asset (Warwickshire HER)	Findspot - Post Medieval coin	None	Negligible	No change

Reference Number	Designation	Name	Description of Potential Impact	Value/Sensitivity	Magnitude of Impact (before mitigation)
MWA8193	Non-designated heritage asset (Warwickshire HER)	The Menagerie within Combe Abbey Deer Park	No physical impact. This listed building is within the ZTV, however as it is based off the DTM LiDAR model, the Scheme would only be visible from the rooftop of the building.	High	No change
MWA8765	Non-designated heritage asset (Warwickshire HER)	Big Rough	None	Low	No change
MWA9584	Non-designated heritage asset (Warwickshire HER)	Ansty Airfield	None	Low	No change
MWA12948	Non-designated heritage asset (Warwickshire HER)	Coventry Rocket Development Test Site	None	Low	No change
MWA20535	Non-designated heritage asset (Warwickshire HER)	Crash site of G-BOLZ south of Coombe Abbey	None	Low	No change
MWA31267	Non-designated heritage asset (Warwickshire HER)	Walsgrave Hill Trig Point, Combe Fields	None	Low	No change
RF1	Non-designated heritage asset (Warwickshire HER)	Ridge and Furrow	None	Low	No change
RF2	Non-designated heritage asset (Warwickshire HER)	Ridge and Furrow	None	Low	No change
RF3	Non-designated heritage asset (Warwickshire HER)	Ridge and Furrow	None	Low	No change

Reference Number	Designation	Name	Description of Potential Impact	Value/Sensitivity	Magnitude of Impact (before mitigation)
RF4	Non-designated heritage asset (Warwickshire HER)	Ridge and Furrow	None	Low	No change
RF5	Non-designated heritage asset (Warwickshire HER)	Ridge and Furrow	None	Low	No change
RF6	Non-designated heritage asset (Warwickshire HER)	Ridge and Furrow	This asset is no longer identifiable on LiDAR or modern Aerial Photography and is considered to be in poor condition. The Scheme has the potential to physically impact upon any surviving remains.	Low	Negligible
RF7	Non-designated heritage asset (Warwickshire HER)	Ridge and Furrow	This asset is no longer identifiable on LiDAR or modern Aerial Photography and is considered to be in poor condition. The Scheme has the potential to physically impact upon any surviving remains.	Low	Negligible
RF8	Non-designated heritage asset (Warwickshire HER)	Ridge and Furrow	None	Low	No change
RF9	Non-designated heritage asset (Warwickshire HER)	Ridge and Furrow	None	Low	No change
RF10	Non-designated heritage asset (Warwickshire HER)	Ridge and Furrow	None	Low	No change
DCT891/ MCT160	Archaeological Constraints Area (Coventry HER)	Binley Mill, Church & related	None	Medium	No change
DCT892	Archaeological Constraints Area (Coventry HER)	Walsgrave Village, Moats & Mill	None	Medium	No change

Reference Number	Designation	Name	Description of Potential Impact	Value/Sensitivity	Magnitude of Impact (before mitigation)
DCT942/ MCT189	Archaeological Constraints Area (Coventry HER)	Binley Windmill	None	Medium	No change
DCT1182/ MCT2235	Archaeological Constraints Area (Coventry HER)	Earthworks North of St. Bartholomew's Church, Binley	None	Medium	No change
DCT1176	Archaeological Constraints Area (Coventry HER)	Area of ridge and furrow north Clifford Bridge Road allotments	None	Medium	No change
DCT893	Archaeological Constraints Area (Coventry HER)	Walsgrave Church & Hall	None	Medium	No change
DCT1359/ MCT15370	Archaeological Constraints Area (Coventry HER)	Site of Post Medieval Brickworks, Skipworth Road	None	Medium	No change
DCT774/ MCT287	Locally Listed Building (Coventry HER)	Rosedale	None	Medium	No change
DCT778/ MCT393	Locally Listed Building (Coventry HER)	28 and 30 School House Lane	No physical impact. This listed building is within the ZTV, however as it is based off the DTM LiDAR model, the Scheme would only be visible from the rooftop of the building.	Medium	No change
DCT779/ MCT15402	Locally Listed Building (Coventry HER)	Old Grammar School	None	Medium	No change
DCT810/ MCT333/ MCT15953	Locally Listed Building (Coventry HER)	Cook's Cottages	None	Medium	No change

Reference Number	Designation	Name	Description of Potential Impact	Value/Sensitivity	Magnitude of Impact (before mitigation)
DCT1152/ MCT2248/ MCT2264	Archaeological Constraints Area (Coventry HER)	Second World War Military Site, Binley	None	Medium	No change
DCT963	Archaeological Constraints Area (Coventry HER)	Alpha Cottage, Walsgrave	None	Medium	No change
MCT15965	Non-designated heritage landscape asset (Coventry HER)	Medieval ridge and furrow off Harry Weston Road, Binley	None	Low	No change
MCT15980	Non-designated heritage landscape asset (Coventry HER)	Medieval ditches off Harry Weston Road	None	Low	No change
MCT63	Non-designated heritage landscape asset (Coventry HER)	Ridge and furrow S of River Sowe, Walsgrave	None	Low	No change
MCT65	Non-designated heritage landscape asset (Coventry HER)	Ridge and Furrow ; Playing Field; S Of Caludon	None	Low	No change
MCT153	Non-designated heritage landscape asset (Coventry HER)	Possible Site of Caludon Deserted Medieval Settlement	None	Medium	No change
MCT304	Non-designated heritage landscape asset (Coventry HER)	Ridge and Furrow; Coventry Eastern Bypass Site 4	None	Low	No change
MCT581	Non-designated heritage landscape asset (Coventry HER)	Area of Ridge And Furrow, Walsgrave On Sowe	None	Low	No change

Reference Number	Designation	Name	Description of Potential Impact	Value/Sensitivity	Magnitude of Impact (before mitigation)
MCT586	Non-designated heritage landscape asset (Coventry HER)	Ridge & Furrow; Binley Road; Stoke	None	Low	No change
MCT588	Non-designated heritage landscape asset (Coventry HER)	Ridge And Furrow; S of Brinklows Road; Binley	None	Low	No change
MCT635	Non-designated heritage landscape asset (Coventry HER)	Clifford DMV; S Of Walsgrave On Sowe	None	Medium	No change
MCT740	Non-designated heritage landscape asset (Coventry HER)	Ridge & Furrow; NW of River Sowe; E of Stoke	None	Low	No change
MCT1064	Non-designated heritage landscape asset (Coventry HER)	Medieval Park; Caludon	None	Low	No change
MCT1066	Non-designated heritage landscape asset (Coventry HER)	Moat/Fishponds: NE of Caludon Castle Moat	None	Low	No change
MCT1076	Non-designated heritage landscape asset (Coventry HER)	The Laurels (Site): Walsgrave On Sowe	None	Low	No change
MCT16481	Non-designated heritage landscape asset (Coventry HER)	Ridge and Furrow	None	Low	No change
MCT16482	Non-designated heritage landscape asset (Coventry HER)	Ridge and Furrow	None	Low	No change

Reference Number	Designation	Name	Description of Potential Impact	Value/Sensitivity	Magnitude of Impact (before mitigation)
MCT16624	Non-designated heritage landscape asset (Coventry HER)	Medieval pit and gully found on land off Harry Western Road	None	Low	No change
MCT16625	Non-designated heritage landscape asset (Coventry HER)	Medieval hearth revealed on land off Harry Weston Road	None	Low	No change
MCT147	Non-designated heritage landscape asset (Coventry HER)	Field Boundary Stone	None	Low	No change
MCT7686	Non-designated heritage landscape asset (Coventry HER)	Abuttal	None	Low	No change
MCT7687	Non-designated heritage landscape asset (Coventry HER)	Abuttal	None	Low	No change
MCT15632	Non-designated heritage landscape asset (Coventry HER)	Colliers Bridge	None	Low	No change
MCT15687	Non-designated heritage landscape asset (Coventry HER)	Bridge	None	Low	No change
MCT15827	Non-designated heritage landscape asset (Coventry HER)	Sow Bridge	None	Low	No change
MCT15828	Non-designated heritage landscape asset (Coventry HER)	Bridge	None	Low	No change

Reference Number	Designation	Name	Description of Potential Impact	Value/Sensitivity	Magnitude of Impact (before mitigation)
MCT16853	Non-designated heritage landscape asset (Coventry HER)	Hedge	None	Low	No change
MCT60	Non-designated heritage landscape asset (Coventry HER)	An Elizabethan coin (1588-1603) found in the Binley area	None	Negligible	No change
MCT539	Non-designated heritage landscape asset (Coventry HER)	Site of pound on Brinklow Road	None	Low	No change
MCT794	Non-designated heritage landscape asset (Coventry HER)	Walsgrave Hall (Site); Hall Lane; Walsgrave on Sowe	None	Low	No change
MCT891	Non-designated heritage landscape asset (Coventry HER)	R & F; Coventry Eastern Bypass Site 3	None	Negligible	No change
MCT1065	Non-designated heritage landscape asset (Coventry HER)	Caludon House	None	Low	No change
MCT15255	Non-designated heritage landscape asset (Coventry HER)	Field	None	Low	No change
MCT15263	Non-designated heritage landscape asset (Coventry HER)	Road	None	Medium	No change
MCT15351	Non-designated heritage landscape asset (Coventry HER)	Road	None	Medium	No change

Reference Number	Designation	Name	Description of Potential Impact	Value/Sensitivity	Magnitude of Impact (before mitigation)
MCT15363	Non-designated heritage landscape asset (Coventry HER)	Farmstead	None	Low	No change
MCT15374	Non-designated heritage landscape asset (Coventry HER)	Road	None	Medium	No change
MCT15380	Non-designated heritage landscape asset (Coventry HER)	Homestead	None	Low	No change
MCT15381	Non-designated heritage landscape asset (Coventry HER)	Homestead	None	Low	No change
MCT15383	Non-designated heritage landscape asset (Coventry HER)	Homestead	None	Low	No change
MCT15384	Non-designated heritage landscape asset (Coventry HER)	Craven Arms Public House	None	Low	No change
MCT15385	Non-designated heritage landscape asset (Coventry HER)	Public House	None	Low	No change
MCT15388	Non-designated heritage landscape asset (Coventry HER)	Vicarage	None	Low	No change
MCT15389	Non-designated heritage landscape asset (Coventry HER)	River Sowe	None	Low	No change

Reference Number	Designation	Name	Description of Potential Impact	Value/Sensitivity	Magnitude of Impact (before mitigation)
MCT15390	Non-designated heritage landscape asset (Coventry HER)	River Sowe	None	Low	No change
MCT15391	Non-designated heritage landscape asset (Coventry HER)	River Sowe	None	Low	No change
MCT15392	Non-designated heritage landscape asset (Coventry HER)	Watermill	None	Low	No change
MCT15393	Non-designated heritage landscape asset (Coventry HER)	Outbuilding	None	Low	No change
MCT15394	Non-designated heritage landscape asset (Coventry HER)	Field and outbuilding	None	Low	No change
MCT15395	Non-designated heritage landscape asset (Coventry HER)	Field and outbuilding	None	Low	No change
MCT15396	Non-designated heritage landscape asset (Coventry HER)	Homestead	None	Low	No change
MCT15397	Non-designated heritage landscape asset (Coventry HER)	School	None	Low	No change
MCT15398	Non-designated heritage landscape asset (Coventry HER)	School	None	Low	No change

Reference Number	Designation	Name	Description of Potential Impact	Value/Sensitivity	Magnitude of Impact (before mitigation)
MCT15399	Non-designated heritage landscape asset (Coventry HER)	Homestead?	None	Low	No change
MCT15403	Non-designated heritage landscape asset (Coventry HER)	Field and Outbuilding	None	Low	No change
MCT15408	Non-designated heritage landscape asset (Coventry HER)	Oak Farm	None	Low	No change
MCT15409	Non-designated heritage landscape asset (Coventry HER)	Field	None	Low	No change
MCT15424	Non-designated heritage landscape asset (Coventry HER)	Farmstead	None	Low	No change
MCT15911	Non-designated heritage landscape asset (Coventry HER)	Road	None	Medium	No change
MCT15927	Non-designated heritage landscape asset (Coventry HER)	Farm yard and associated buildings, Caludon	None	Low	No change
MCT15928	Non-designated heritage landscape asset (Coventry HER)	Orchard	None	Low	No change
MCT15929	Non-designated heritage landscape asset (Coventry HER)	Farm	None	Low	No change

Reference Number	Designation	Name	Description of Potential Impact	Value/Sensitivity	Magnitude of Impact (before mitigation)
MCT15947	Non-designated heritage landscape asset (Coventry HER)	Homestead	None	Low	No change
MCT15948	Non-designated heritage landscape asset (Coventry HER)	Homestead	None	Low	No change
MCT15949	Non-designated heritage landscape asset (Coventry HER)	Homestead	None	Low	No change
MCT15950	Non-designated heritage landscape asset (Coventry HER)	Field	None	Low	No change
MCT15951	Non-designated heritage landscape asset (Coventry HER)	Homestead	None	Low	No change
MCT15952	Non-designated heritage landscape asset (Coventry HER)	Road	None	Negligible	No change
MCT15955	Non-designated heritage landscape asset (Coventry HER)	Stream	None	Low	No change
MCT15956	Non-designated heritage landscape asset (Coventry HER)	Pingle	None	Low	No change
MCT15964	Non-designated heritage landscape asset (Coventry HER)	Field	None	Low	No change

Reference Number	Designation	Name	Description of Potential Impact	Value/Sensitivity	Magnitude of Impact (before mitigation)
MCT15973	Non-designated heritage landscape asset (Coventry HER)	Sheepwash	None	Low	No change
MCT15982	Non-designated heritage landscape asset (Coventry HER)	Old Quarry?	None	Low	No change
MCT16036	Non-designated heritage landscape asset (Coventry HER)	Field	None	Low	No change
MCT16039	Non-designated heritage landscape asset (Coventry HER)	Road	None	Medium	No change
MCT16040	Non-designated heritage landscape asset (Coventry HER)	Road	None	Medium	No change
MCT16041	Non-designated heritage landscape asset (Coventry HER)	Road	None	Medium	No change
MCT16042	Non-designated heritage landscape asset (Coventry HER)	Field	None	Low	No change
MCT16043	Non-designated heritage landscape asset (Coventry HER)	Stream	None	Low	No change
MCT16044	Non-designated heritage landscape asset (Coventry HER)	Wood	None	Low	No change

Reference Number	Designation	Name	Description of Potential Impact	Value/Sensitivity	Magnitude of Impact (before mitigation)
MCT16045	Non-designated heritage landscape asset (Coventry HER)	High Bridge	None	Low	No change
MCT16051	Non-designated heritage landscape asset (Coventry HER)	Homestead	None	Low	No change
MCT16055	Non-designated heritage landscape asset (Coventry HER)	Stream	None	Low	No change
MCT16142	Non-designated heritage landscape asset (Coventry HER)	Pond	None	Low	No change
MCT16143	Non-designated heritage landscape asset (Coventry HER)	Pond	None	Low	No change
MCT16144	Non-designated heritage landscape asset (Coventry HER)	Pleck	None	Low	No change
MCT16200	Non-designated heritage landscape asset (Coventry HER)	Stream	None	Low	No change
MCT16201	Non-designated heritage landscape asset (Coventry HER)	Pond	None	Low	No change
MCT16474	Non-designated heritage landscape asset (Coventry HER)	Little Court and Gardens at Caludon Castle	None	Low	No change

Reference Number	Designation	Name	Description of Potential Impact	Value/Sensitivity	Magnitude of Impact (before mitigation)
MCT16962	Non-designated heritage landscape asset (Coventry HER)	Dove Sculpture, Richard Lee School	None	Low	No change
MCT16483	Non-designated heritage landscape asset (Coventry HER)	Building	None	Low	No change
MCT15311	Non-designated heritage landscape asset (Coventry HER)	Richard Lee School, The Drive, Wyken	None	Low	No change
MCT15981	Non-designated heritage landscape asset (Coventry HER)	Line of post holes of unknown date, Harry Weston Road, Binley	None	Low	No change
MCT16484	Non-designated heritage landscape asset (Coventry HER)	Deposit of Charcoal, Coventry Pipeline Phase 2	None	Low	No change
MCT16516	Non-designated heritage landscape asset (Coventry HER)	Undated charcoal spread, Walsgrave Hospital Area 1	None	Low	No change
MCT16600	Non-designated heritage landscape asset (Coventry HER)	Linear features, possible building and pits at Caludon Castle School	None	Low	No change
MCT16626	Non-designated heritage landscape asset (Coventry HER)	Pair of intersecting gullies and post hole of unknown date at land off Harry Weston Road	None	Low	No change
MCT8297	Non-designated heritage landscape asset (Coventry HER)	Undated pit, Walsgrave Acute Hospital Site	None	Low	No change

Reference Number	Designation	Name	Description of Potential Impact	Value/Sensitivity	Magnitude of Impact (before mitigation)
HA001	Headland Identified Asset	Possible important hedgerow	There is potential that this hedgerow will be removed as part of this development.	Low	Negligible
HA002	Headland Identified Asset	Possible important hedgerow	There is potential that this hedgerow will be removed as part of this development.	Low	Negligible
HA003	Headland Identified Asset	Possible important hedgerow	There is potential that this hedgerow will be removed as part of this development.	Low	Negligible
HA004	Headland Identified Asset	Possible important hedgerow	There is potential that this hedgerow will be removed as part of this development.	Low	Negligible
HA005	Headland Identified Asset	Possible important hedgerow	There is potential that this hedgerow will be removed as part of this development.	Low	Negligible
HA006	Headland Identified Asset	Former field system	None	Negligible	No change
HA007	Headland Identified Asset	Orchard	None	Negligible	No change
HA008	Headland Identified Asset	Ponds	None	Negligible	No change
HA009	Headland Identified Asset	Stream	None	Low	No change
HA010	Headland Identified Asset	Road	None	Negligible	No change
HA011	Headland Identified Asset	Gravel Pit	None	Negligible	No change

References

Ancient Monuments and Archaeological Areas Act (1979)

Bradley, Richard (2007) The Prehistory of Britain and Ireland, Cambridge University Press

British Geological Society (BGS) (2018). Geology of Britain viewer. [online] available at: <https://www.bgs.ac.uk/map-viewers/geology-of-britain-viewer/> (last accessed June 2024)

Coventry City Council (2013) Coventry Historic Landscape Characterisation Report [online] available at: https://www.coventry.gov.uk/downloads/download/2996/coventry_historic_landscape_characterisation_report (last accessed 11/06/2024)

Coventry City Council (2017) Local Plan 2011-2031

Coventry City Council (2023) [online] Coombe Abbey Park Management Plan 2024 - 2028 available at: <https://www.coventry.gov.uk/downloads/download/7066/coombe-abbey-park-management-plan-2018---2023-updated-2022> last accessed 04/04/2024

Coventry Society [online] available at: <https://www.coventrysociety.org.uk/coventry-neighbourhoods/binley/> (last accessed June 2024)

Domesday Book Online (2014) [online] available at: <https://www.domesdaybook.co.uk/index.html> (last accessed April 2024)

The English Placename Society [online] available at: <https://epns.nottingham.ac.uk/browse/Warwickshire/Binley/53287435b47fc40c5f000737-Binley> (last accessed June 2024)

Rugby Borough Council (2010) Coombe Abbey Conservation Area Appraisal [online] available at: https://www.rugby.gov.uk/documents/20124/6569677/Coombe_Abbey_Character_Appraisal.pdf/2a9e4dde-13c9-bd37-379d-510597701c1a?t=1702313821542 (last accessed June 2024)

Rugby Borough Council Local Plan (2017), 2011-2031

Chartered Institute for Archaeologists (2014, updated 2017) Standard and guidance for desk-based assessment [online] available at: <https://www.archaeologists.net/codes/cifa> (last accessed June 2024)

Cranfield Soil and Agrifood Institute (2018) Soilscales. Available at: <http://www.landis.org.uk/soilscales> [accessed June 2024]

Department for Communities and Local Government (2018) National Planning Policy Framework [online] available at: <https://www.gov.uk/government/publications/national-planning-policy-framework--2> (last accessed May 2020)

Department for Transport (2024) National Policy Statement for National Networks [online] available at: <https://www.gov.uk/government/publications/national-networks-national-policy-statement> (last accessed June 2024)

IEMA, IHBC and ClfA (2021) Principles of Cultural Heritage Impact Assessment in the UK

Highways Agency (2020) Design Manual for Roads and Bridges (DMRB), Volume 11, Section 3, Part 2

Historic England (2008) Conservation principles policies and guidance for the sustainable management of the historic environment [online] available at <https://historicengland.org.uk/images-books/publications/conservation-principles-sustainable-management-historic-environment/> (last accessed June 2024)

Historic England (2015) Historic Environment Good Practice Advice in Planning Note 2 Managing Significance in Decision Taking in the Historic Environment [online] available at: <https://historicengland.org.uk/images-books/publications/gpa2-managing-significance-in-decision-taking/gpa2/> (last accessed May June 2024)

Historic England (2016) Understanding Historic Buildings: a guide to good recording practice [online] available at: <https://historicengland.org.uk/images-books/publications/understanding-historic-buildings/> (last accessed June 2024)

Historic England (2017) Historic Environment Good Practice Advice in Planning Note 3 The Setting of Heritage Assets 2nd ed. [online] <https://historicengland.org.uk/images-books/publications/gpa3-setting-of-heritage-assets/heag180-gpa3-setting-heritage-assets> (last accessed June 2024)

Meaney, P, Gazetteer of Hundred and Wapentake meeting places in the Cambridge region, Proceedings of the Cambridge Antiquarian Society 82, 67-92

Planning (Listed Building and Conservation Areas) Act (1990)

Research Frameworks Network, West Midlands Research Framework [online] available at <https://researchframeworks.org/wmrf/> (last accessed June 2024)

(1756) Sowe inclosure act (no plan) Act: 29 Geo II c.36 1756 Warwickshire County record office DR104/1

Cartographic Sources

(1847) Hamlets of Whitley and Calludon Tithe Warwickshire county record office
CR569/86

(1886) County series 1st Edition, Warwickshire XXII NW and SW 1:10,560

(1887) County series 1st Edition, Warwickshire XXII.6 1:2,500

(1902-1903) County Series 1st Revision, Warwickshire XXII NW and SW 1:10,560

(1905) County Series 1st Revision, Warwickshire XXII.6 1:2,500

(1912) County Series 2nd Revision, Warwickshire XXII NW and SW 1:10,560

(1913) County Series 2nd Revision, Warwickshire XXII.6 1:2,500

(1923) County Series Warwickshire XXII NW and SW 1:10,560

(1925) County Series Warwickshire XXII.6 1:2,500

(1938) County Series Warwickshire XXII NW and SW 1:10,560

(1945) County Series Warwickshire XXII 1:2,500

(1948-1955) National Grid 1st Imperial Edition SP37NE and SP38SE 1:10,560

(1948-1964) National Grid 1st Revision, SP37NE and SP38SE 1:10 560

Abbreviations and glossary

Abbreviations

Acronym	Meaning
AOD	Above Ordnance Datum (above sea-level)
AP	Aerial Photograph
BCE	Before Common Era
BGS	British Geological Survey
C	Century
c.	Circa
Coventry City Council	Coventry City Council
CE	Common Era
CifA	Chartered Institute for Archaeologists
DBA	Desk-based Assessment
DCO	Development Consent Order
DMRB	Design Manual for Roads and Bridges
DMV/SMV	Deserted/Shrunken Medieval Village
DSM	Digital Surface Model
DTM	Digital Terrain Model
EIA	Environmental Impact Assessment
EMP	Environment Management Plan
ES	Environmental Statement
HA	Headland Archaeology
HE	Historic England
HER	Historic Environment Record
HLC	Historic Landscape Character(isation)
IEMA	Institute of Environmental Management and Assessment
IHBC	Institute of Historic Building Conservation
LiDAR	Light Detection and Ranging
LPA	Local Planning Authority
MPP	Monument Protection Programme
NGR	National Grid Reference
NHLE	National Heritage List for England
NPPF	National Planning Policy Framework
NSIP	Nationally Significant Infrastructure Project
OS	Ordnance Survey
Rugby Borough Council	Rugby Borough Council
RPG	Registered Park & Garden
WSI	Written Scheme of Investigation (project design or method statement)
ZTV	Zone of Theoretical Visibility
ZVI	Zone of Visual Influence

Glossary

Glossary term	Definition
Archaeological Site (also 'Monuments')	Heritage assets which may consist of surface and/or sub-surface remains, features, deposits and/or material relating to past human activity with a degree of significance meriting consideration in planning decisions.
Artefact	An item of archaeological interest
Baseline	'Baseline conditions' are the environmental conditions in existence just before the occurrence of an impact – i.e. they are the conditions that would be affected.
Bronze Age	The period of human activity between 2,500 BCE and 700 BCE
Designated Heritage Asset	Assets registered on the National Heritage List for England. These may be protected by primary legislation (e.g. listed buildings, conservation areas, scheduled monuments) or have a non-statutory designation (e.g. World Heritage Sites, registered battlefields, registered parks and gardens, designated wrecks)
Earthworks	The moving of soil or rock to reconfigure the topography of a site.
Enclosure	A single or collection of boundaries surrounding a parcel of land. e.g.: hedgerows, walls, ditches, earth banks, fences etc.
Environmental Impact Assessment (EIA)	An assessment of certain types of major project of the significant effects that the project could have on the environment. The applicant is required to carry out the assessment by law, in this case under the Infrastructure Planning (Environmental Impact Assessment) Regulations, 2017.
Environmental Management Plan (EMP)	A plan prepared by a contractor before the start of construction work, detailing 'environmental aspects' that may be affected by the construction work and management methods to prevent any such effects. The EMP would include methods and site management practices to be applied to prevent generation of nuisance dust, accidental pollution events and a range of other potential sources of accidental damage to the environment, and response and reporting procedures to minimise the damage in the event of a pollution incident.
Environmental Statement (ES)	The report on the results of the EIA.
Fieldwalking survey	Method of systematic non-intrusive survey involving walking across a plough field along transects to collect archaeological artefacts.
Geology	Geology is the study of solid earth, the material of which it is composed (principally rocks) and the processes by which they evolve.
Geophysical survey	Method of non-intrusive investigation involving the use of magnetometers to identify fluctuations in the earth's magnetic field which might indicate the presence of archaeological remains. Burnt remains and metals are best identified through this method of survey.
Heritage Asset NPPF (Annex 2)	<p>"A building, monument, site, place, area or landscape identified as having a degree of significance meriting consideration in planning decisions, because of its heritage interest."</p> <p>Some heritage assets are designated as Scheduled Monuments, Listed Buildings, World Heritage Sites, Conservation Areas, Registered Parks and Gardens, Registered Battlefields, or locally designated through policies in the Local Plan. Undesignated assets may be recorded in Historic Environment Records, while many other assets are currently unrecorded.</p> <p>Information contained in HERs and SMRs is not definitive, since they may include features which, for instance, have been entirely removed, or are of uncertain location,</p>

Glossary term	Definition
	dubious identification, or negligible importance. The identification of undesignated heritage assets is therefore to some extent a matter of professional judgement. Both discrete features, and extensive landscapes defined by a specific historic event, process or theme, can be defined as heritage assets; and assets may overlap or be nested within one another.
Heritage asset	An item of heritage interest, for example an historic building or an archaeological find.
Historic Environment Records (HER)	A database maintained by individual counties or local authorities, containing records of archaeological sites, historic buildings and other aspects.
Historic landscape character types (HLCT)	Historic landscape character types are distinctive and repeated combinations of components defining generic historic landscapes such as 'ancient woodland' or 'parliamentary enclosure'. The types used in this study were defined based on evidence from historic maps and other sources.
Inclosure	A process of consolidating and adding fixed boundaries to agricultural fields by act of parliament, local government or, in some cases, by formal civil contract. The spelling of "inclosure" changed by time and location and thus, acts of "Inclosure" or "Enclosure" are interchangeable in the historical record. In this report, Inclosure is used for consistency.
Iron Age	The period of human activity between 700 BCE and 43 CE
Listed Building	A building or structure which is considered to be of 'special architectural or historic interest'
Medieval	The period of human activity between 1066 CE and 1550 CE
Mesolithic	Middle Stone Age. The period of human activity between 10,000 BCE and 4,500 BCE.
Mitigation	Measures which have the purpose of avoiding, reducing or compensating for adverse environmental impacts. It may also include measures to create environmental benefits.
Modern	The period of human activity from 1900 to the present day
Neolithic	New Stone Age. The period of human activity between 4,500 BCE and 2,500 BCE
Non-Designated Heritage Asset	Assets identified by the local planning authority or national registers for the historic environment which have no formal designation but are considered to have a degree of significance meriting consideration in planning decisions. These can include locally listed buildings, information on sites held by the relevant Historic Environment Record and National Record of the Historic Environment
Ordnance Datum	The standard measure of sea level in the UK, from which all heights are measured for mapping purposes.
Palaeolithic	Old Stone Age. The period of human and pre-human activity before around 10,000 BCE
Post-medieval	The period of human activity between 1550 CE and 1900 CE
Prehistoric	The period before the year 43 CE
Receptor	The existing environmental feature that would be affected by an impact – for instance a specific archaeological site
Roman	The period of human activity between 43 CE and 410 CE

Glossary term	Definition
Saxon	The period of human activity between 410 CE and 1066 CE
Setting: NPPF	“The surroundings in which a heritage asset is experienced. Its extent is not fixed and may change as the asset and its surroundings evolve. Elements of a setting may make a positive or negative contribution to the significance of an asset, may affect the ability to appreciate the significance or may be neutral” (an extended consideration of Setting is contained in GAPN 3)
Significance: NPPF	“the value of a heritage asset to this and future generations because of its heritage interest. That interest may be archaeological, architectural, artistic or historic. Significance derives not only from a heritage asset’s physical presence, but also from its setting”
Significance: GAPN 2	“The significance of a heritage asset is the sum of its archaeological, architectural, historic, and artistic interest. A variety of terms are used in designation criteria (for example, outstanding universal value for World Heritage Sites, national importance for scheduled monuments and special interest for listed buildings and conservation areas), but all of these refer to a heritage asset’s significance.”
Significance: NPPF (PPG para 6) and Historic England guidance Statement of Heritage Significance: Analysing Significance in Heritage Assets (2019, HEAN 12)	<p>Cultural values in the historic environment that people want to enjoy and sustain for the benefit of present and future generations.</p> <p>Archaeological - There will be archaeological interest in a heritage asset if it holds, or potentially holds, evidence of past human activity worthy of expert investigation at some point;</p> <p>Architectural - These are interests in the design and general aesthetics of a place. They can arise from conscious design or fortuitously from the way the heritage asset has evolved. More specifically, architectural interest is an interest in the art or science of the design, construction, craftsmanship and decoration of buildings and structures of all types;</p> <p>Artistic - Artistic interest is an interest in other human creative skills, like sculpture;</p> <p>Historic - An interest in past lives and events (including pre-historic). Heritage assets can illustrate or be associated with them. Heritage assets with historic interest not only provide a material record of our nation’s history, but can also provide meaning for communities derived from their collective experience of a place and can symbolise wider values such as faith and cultural identity.</p>
Zone of Theoretical Influence (ZVI)	The zone from which the scheme could theoretically impart an impact based partly on visibility and professional judgement
Zone of Theoretical Visibility (ZTV)	The zone from which the scheme is theoretically visible over ‘bare earth’